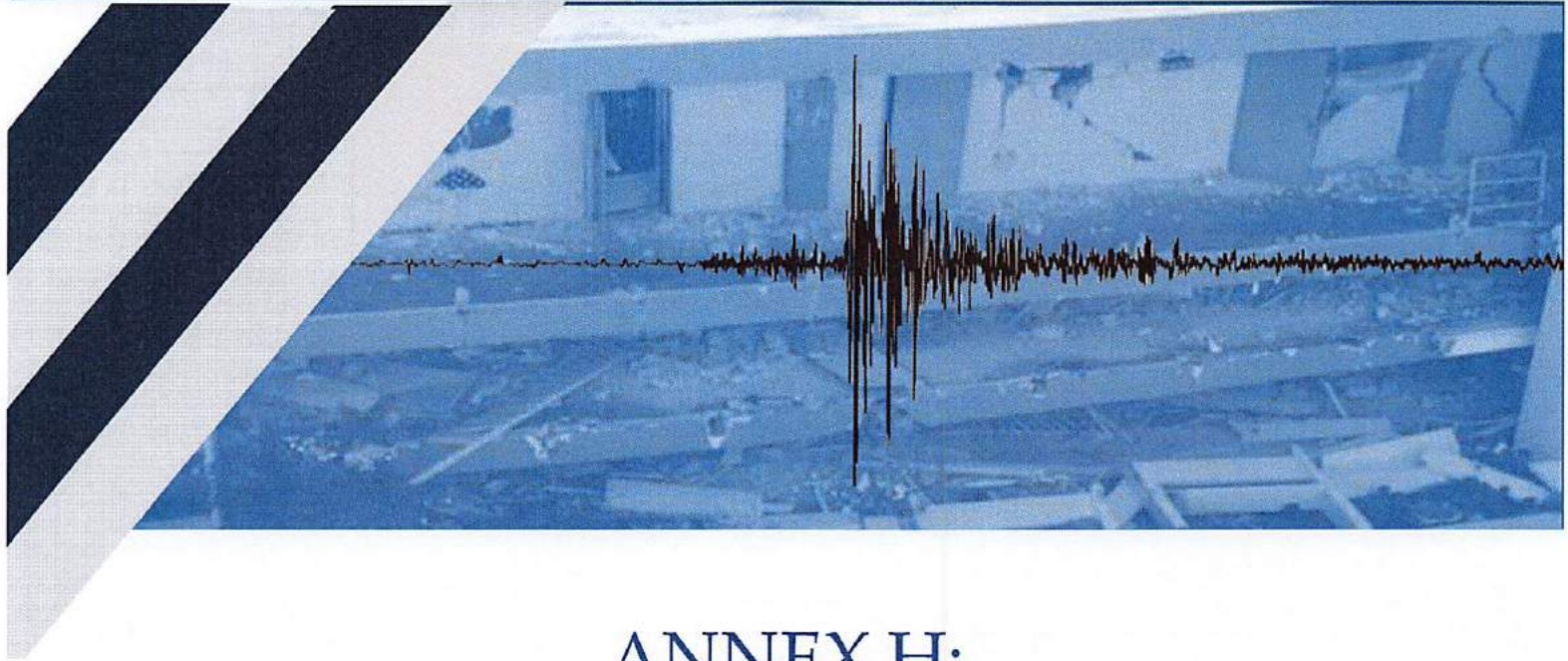


Operational Earthquake Plan of Puerto Rico



ANNEX H: To Puerto Rico All Hazards Plan of Puerto Rico Emergency Management Bureau (PREMB) January 2021



For Official Use Only

Protected Critical Infrastructure Information

V 1.6

- White House Memorandum, Background paper on Essential Functions Concept and Implementation and Rec Guidelines for Submitting Department/Agencies Priority Mission Essential Functions Information, dated January 10, 2005, by David W. Howe.

2. State – Government of Puerto Rico

- Ley 20 del 10 de abril de 2017. Departamento de Seguridad Pública Negociado de Manejo de Emergencias y Administración de Desastres de Puerto Rico.
- Orden Ejecutiva 2014-043 Implementación del Sistema Nacional de Manejo de Emergencias (NIMS), 2014

References

1. Comprehensive Preparedness Guide CPG 101 Ver. 2 nov. 2010
2. Homeland Security Exercise and Evaluation Program. 2013, DHS
3. NFPA 1600 + Standard on Disaster/Emergency Management and Business Continuity/Continuity of Operations Programs (NFPA 1600, 2016)
4. HSPD 7, Critical Infrastructure Identification, Prioritization, and Protection (CIP), dated Dec 17, 2003.
5. HSPD 8, National Preparedness, dated December 17, 2003.
6. Presidential Policy Directive + PPD+8 + National Preparedness
7. The National Incident Management System (NIMS) Third Edition October 2017
8. National Disaster Recovery Framework September 2011
9. Nieves, B. Hurricane Maria Preliminary After Action Report Puerto Rico Emergency Management Agency Department of Public Safety of Puerto Rico and ISP, Inc. October 29, 2017
10. USGS (2001) Earthquakes and Tsunamis in Puerto Rico and the US Virgin Islands United States Geological Survey. USGS Fact Sheet FS-141-00 April 2001
11. FEMA (2020) FEMA Shelter Field Guide P-785. FEMA Page 8
12. USCB (2019) Annual Estimates of the Resident Population: April 1, 2010 to July 1, 2018. United States Census Bureau. Retrieved from [https://factfinder.census.gov/faces/tableservices/jsf/pages/productview.xhtml?pid=](https://factfinder.census.gov/faces/tableservices/jsf/pages/productview.xhtml?pid=PEP_2018_PEPANNRES&prodType=table)
=
13. PEP_2018_PEPANNRES&prodType=table
14. RSPR (n.d.). Terremoto de 1918. Departamento de Geología. Universidad de Puerto Rico Recinto de Mayagüez.
<http://redsismica.uprm.edu/Spanish/educacion/terremotospr/terremoto18.php>
15. RSPR (n.d.). Folleto de Tsunami. Departamento de Geología. Universidad de Puerto Rico Recinto de Mayagüez.
<http://redsismica.uprm.edu/Spanish/tsunami/media/Publication--sismonotas-tsunamis.pdf>
16. Martínez J., López R., González Y. (2013) *Rehabilitación Sísmica de Casas en Zancos. Programa de Movimiento Fuerte de Puerto Rico. Departamento de*

- Ingeniería Civil y Agrimensura. Universidad de Puerto Rico en Mayagüez. Page 1. ISBN: 978-1-934325-99-5, 1-934325-96-6*
17. Prentice and Mann (2005). "Paleoseismic Study of the South Lajas Fault"
18. Martínez J., López R., González Y. (2013) *Rehabilitación Sísmica de Casas en Zancos. Programa de Movimiento Fuerte de Puerto Rico. Departamento de Ingeniería Civil y Agrimensura. Universidad de Puerto Rico en Mayagüez. Page 2. ISBN: 978-1-934325-99-5, 1-934325-96-6*
19. FEMA (2016) Federal Emergency Management Agency. National Response Framework. Third Edition. US Department of Homeland Security. Washington, D.C. https://www.fema.gov/media-library-data/1466014682982-9bcf8245ba4c60c120aa915abe74e15d/National_Response_Framework3rd.pdf
20. Molinelli J. (n.d.) *¿Cómo Protegerse en Caso de Terremoto? ¿Qué peligros geológicos acompañan los terremotos? Defensa Civil del Municipio de San Juan.*
21. Mann P. (2005) Special Paper 385. Institute for Geophysics, Jackson School of Geosciences, University of Texas at Austin, 4412 Spicewood Springs Road, Building 600, Austin, Texas 78759, USA
22. RSPR (2019) Catálogo general de Sismos. Red Sísmica de Puerto Rico. Recinto Universitario de Mayagüez. Universidad de Puerto Rico. Departamento de Geología.
23. FEMA (2012) Puerto Rico Catastrophic Earthquake Annex. Federal Emergency Management Agency Region II. Appendix 2 Page A2-1
24. FEMA (2012) Puerto Rico Catastrophic Earthquake Annex. Federal Emergency Management Agency Region II. Appendix 8 Page A8-1
25. RSPR (2019) Glosario de términos para productos de terremotos y tsunamis de la RSPR. Red Sísmica de Puerto Rico. Universidad de Puerto Rico. Departamento de Geología
<http://redsismica.uprm.edu/Spanish/glosario/index.php#intensidad>
26. RSPR (2020) El tamaño de un terremoto. Escala Mercalli Modificada. Red Sísmica de Puerto Rico.
<http://redsismica.uprm.edu/Spanish/educacion/terremotos/tamano.php>

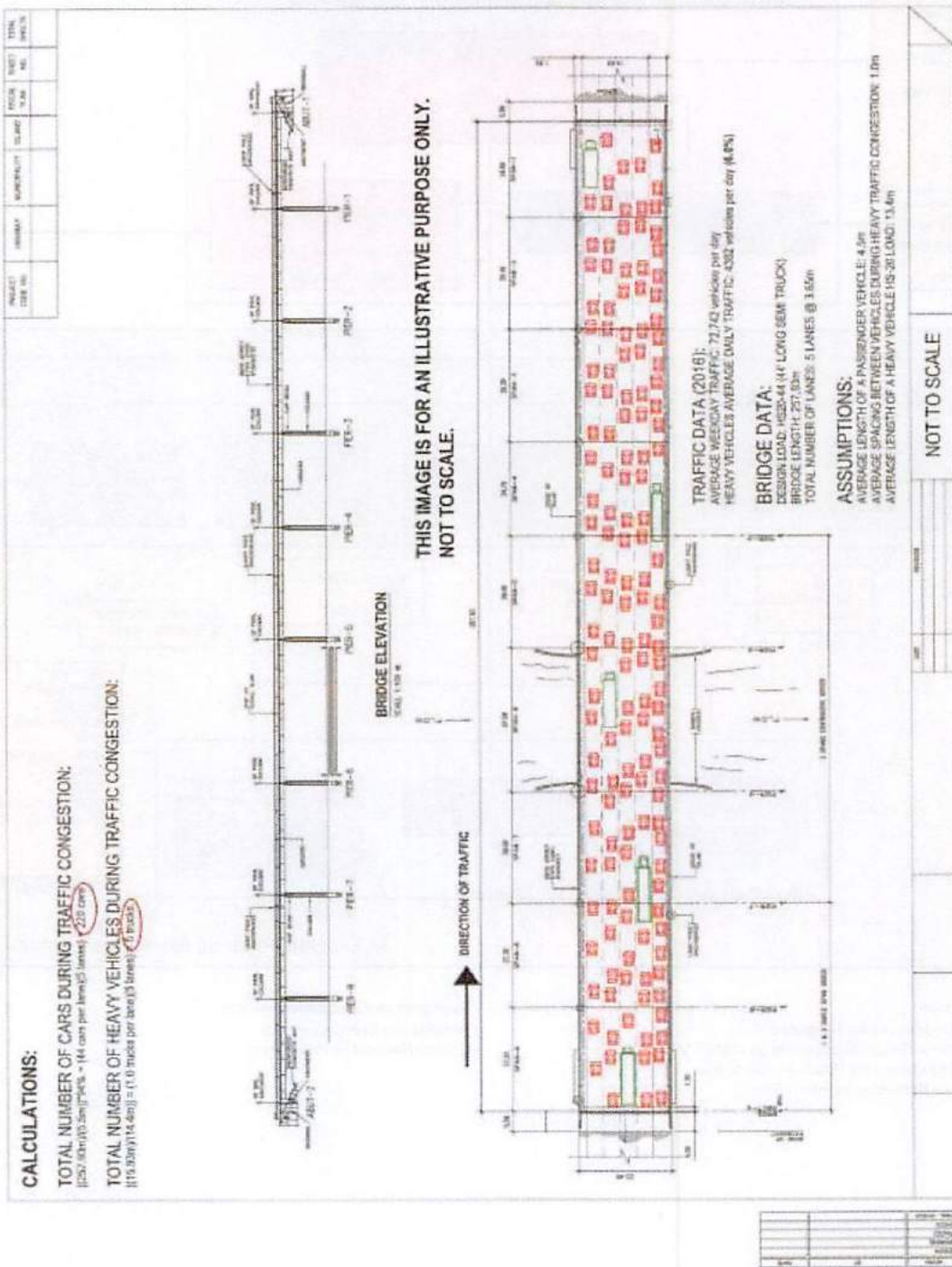
27. RSPR (2020) Glosario de términos para productos de terremotos y tsunamis de la RSPR. Red Sísmica de Puerto Rico.
<http://redsismica.uprm.edu/Spanish/glosario/index.php>
28. USCB (2017) 2013-2017 American Community Survey 5-Year Estimates. United States Census Bureau. American Fact Finder. Retrieved from
<https://factfinder.census.gov>
29. USGS (2008) Liquefaction Susceptibility of the Bayamón and San Juan Quadrangles, Puerto Rico. US Geological Survey
30. Molinelli, J. Et Als. (2017) Acta Científica. VOL. 31(1-3), 2017. ISSN: 1940-1148. AM CPR
31. RSPR (2020) Mapa de Inundación y desalojo de Tsunami. Programa de Tsunami. Red Sísmica de Puerto Rico.
32. NDNR (2020) Dam Safety. Common Problems at Dams.
<https://dnr.nebraska.gov/dam-safety/common-problems-dams>
33. Nieves B. (2015) Análisis de Riesgo para Plan Operacional de Emergencia para Colapso de Represa Carraízo. ISP
34. AAA (2020) Embalses y Represas. Autoridad de Acueductos y Alcantarillados de Puerto Rico.
<http://www.acueductospr.com/NIVELES/EMBALSES/embalseCAONILLAS.html>
35. PH (2020) Hospital Damas desaloja de forma preventiva una de sus torres. Primera Hora. 7 de enero, 2020.
36. FLDOH (2020) Hospital Medical Surge Planning for Mass Casualty Incidents
37. Martínez J., López R., González Y. (2013) Rehabilitación Sísmica de Casas en Zancos. Programa de Movimiento Fuerte de Puerto Rico. Departamento de Ingeniería Civil y Agrimensura. Universidad de Puerto Rico en Mayagüez. Página 1. ISBN: 978-1-934325-99-5, 1-934325-96-6
38. ASCE (2019) Report Card of Puerto Rico's Infrastructure. American Society of Civil Engineers Puerto Rico Section [Infrastructurereportcard.org/puerto-rico](http://infrastructurereportcard.org/puerto-rico)
39. FHA (2019) Bridge Condition by Year Built. US Department of Transportation. Federal Highway Administration. Retrieved from
<https://www.fhwa.dot.gov/bridge/britab.cfm>

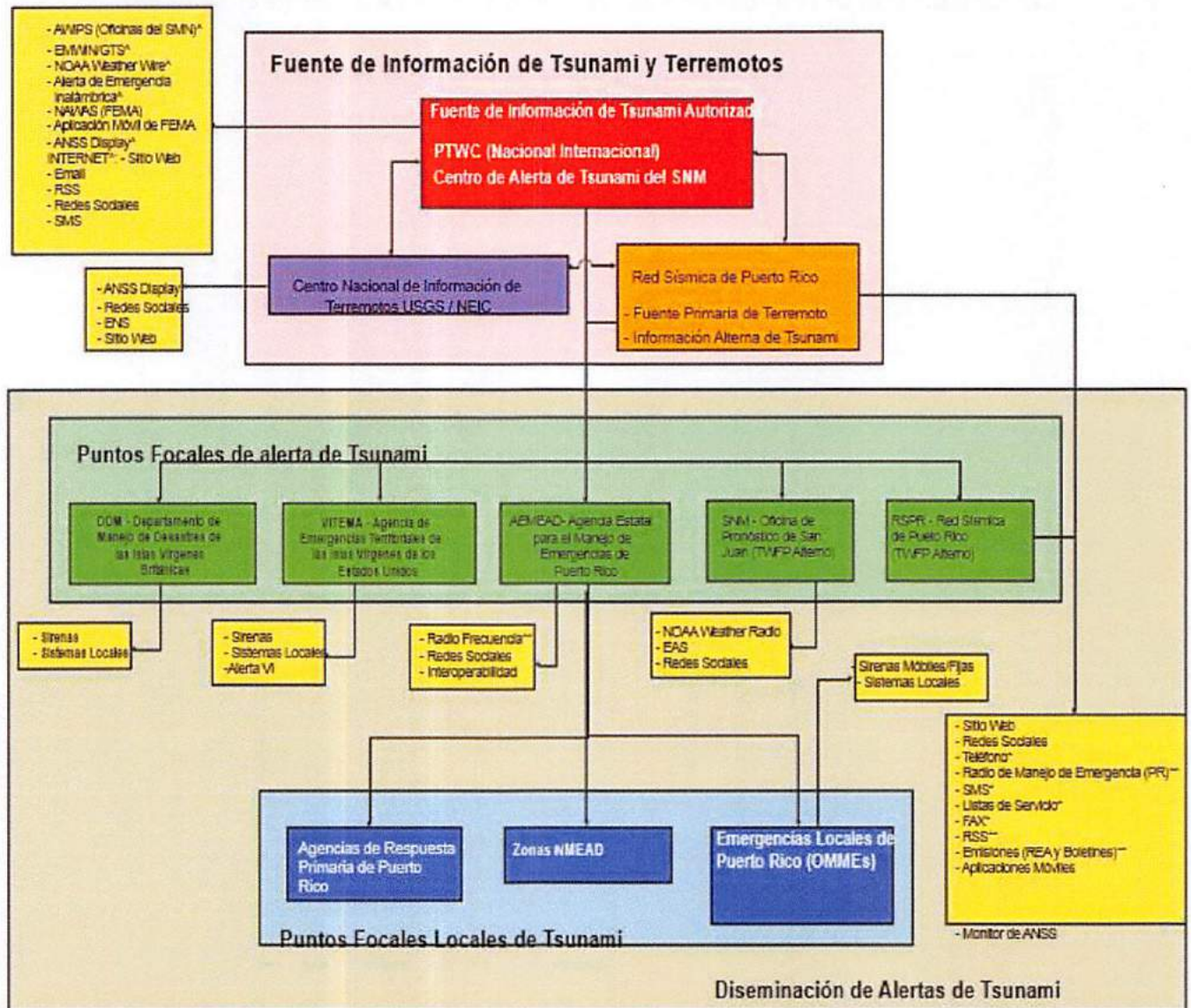
40. PRHTA (2019) 2028 Puerto Rico Transportation Asset Management Plan. Chapter 5 Risk Identification and Management. Puerto Rico Highway and Transportation Authority. Page 5-19 Section 9.7
41. FHA (2019) Bridge Condition by Year Built. US Department of Transportation. Federal Highway Administration. Retrieved from <https://www.fhwa.dot.gov/bridge/britab.cfm>
42. Brink U., Flores C. Natural Hazards, Coastal and Marine Hazards and Resources Program, Woods Hole Coastal and Marine Science Center. USGS Caribbean Tsunami and Earthquake Hazard Study Models. Agosto 8, 2008
43. Dunbar P., Weaver C. (208) U.S. States and Territories National Tsunami Hazard Assessment: Historical Record and Sources for Waves. National Oceanic and Atmospheric Administration. U.S. Geological Survey. P. 2-11
44. Dunbar P., Weaver C. (208) U.S. States and Territories National Tsunami Hazard Assessment: Historical Record and Sources for Waves. National Oceanic and Atmospheric Administration. U.S. Geological Survey. P. 3-8
45. Molinelli J. (n.d.) ¿Cómo Protegerse en Caso de Terremoto? ¿Qué peligros geológicos acompañan los terremotos? Defensa Civil del Municipio de San Juan.
46. ANGLE (2020). Seismic Geohazards & Earthquake Hazard Maps https://serc.carleton.edu/ANGLE/educational_materials/activities/205530.html
47. Perez, O. (2020) Colegio de Ingenieros: 500 escuelas podrían colapsar en un terremoto. Primera Hora. Enero 8, 2020. <https://www.primerahora.com/noticias/puerto-rico/nota/colegiodeingenieros500escuelaspodriancolapsarenunterremoto-1385826/>
48. Charón J., Ramirez J. , Portela G. Inspección Rápida para Estructuras a ser Consideradas para Desalojo Vertical. Red Sísmica de Puerto Rico.
49. Building Performance Assessment: Hurricane Georges In Puerto Rico, FEMA 339 (1999)
50. CIAPR (2011) Puerto Rico Building Code. Colegio de Ingenieros y Agrimensores de Puerto Rico

51. FEMA (2018) Federal Emergency Management Agency. 2017 Hurricane Season FEMA After Action Report July 12, 2018. Page 9. US Department of Homeland Security. Washington DC.
52. ANAV (2019) Heliports. Air.nav. Retrieved from <http://www.airnav.com/airports/pr?use=R&type=H>
53. FEMA (2011) Presidential Policy Directive -8 (PPD-8), National Preparedness, 2011
54. FEMA (2020) FEMA Shelter Field Guide P-785. FEMA Page 8

APPENDICES

1. Calculation of Number of Vehicles on a Bridge or Road (Metropistas)



2. TSUNAMI COMMUNICATION PROTOCOL FOR PUERTO RICO & USVI⁵⁷

* Por Suscripción

** Servicios Dedicados para Respuesta

^ Mensajes Transmitidos Directamente de NWS/TWC

° Incluye: - Negociado de la Policía de Puerto Rico

- Negociado de Bomberos de Puerto Rico


- Negociado de Emergencias Médicas

* Autoridad de Energía Eléctrica

- Guardia Nacional de Puerto Rico

⁵⁷ Red Sísmica de Puerto Rico. 2017. *Tsunami: Guía para los medios de Puerto Rico*. Ted. Mayagüez, PR.

3. Tsunami Notifications



Si SIENTE, VE o ESCUCHA alguna de estas señales:


- **TERREMOTO FUERTE O DE LARGA DURACIÓN** (¡No! manténgase de pie o tumbado por más de 20 segundos)
- **CAMBIO REPENTINO DEL NIVEL DEL MAR**
- **RUIDO FUERTE QUE PROVIENE DEL MAR**
- **AVISO OFICIAL DE TSUNAMI.**

ALEJESE DE LA COSTA o MUEVASE INMEDIATAMENTE a un LUGAR ALTO. Se recomienda **DESALOJAR A PIE** por las rutas sugeridas.

If you FEEL, SEE or HEAR any of these signs:

- **A STRONG or LONG EARTHQUAKE** (You can hardly walk or stand for more than 20 seconds)
- **DRASTIC CHANGE IN SEA LEVEL**
- **LOUD NOISE FROM THE SEA**
- **OR**
- **AN OFFICIAL TSUNAMI WARNING IS ISSUED.**

IMMEDIATELY MOVE to HIGH GROUND or INLAND. WALK, DON'T DRIVE.




- ¡Peligro! / *Danger!*
- ¡Corra a tierras altas! / *Run to high ground!*
- Siga las instrucciones de emergencia / *Follow emergency instructions.*

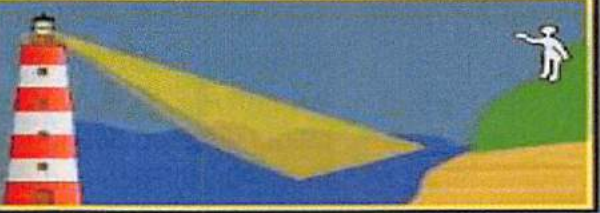
Aviso Warning

Advertencia Advisory


- Posibles corrientes locales fuertes y peligrosas / *Possible strong and dangerous local currents.*
- Salga de la playa, puertos y mareas / *Move off the beach and out of harbors and marinas.*
- Esté pendiente para información oficial / *Stay tuned for official emergency guidance.*



- En esta area, se desconoce el impacto esperado de tsunami / *Expected tsunami impact is unknown for this area.*
- Permanezca alerta para más información oficial / *Stay tuned for more official information.*



Vigilancia Watch



- Un temblor ha ocurrido, no se ha emitido aviso, advertencia o vigilancia / *An earthquake has occurred, no warning, advisory or watch has been issued.*

Boletín Informativo Information Statement

¡Disfrute su día de playa y esté preparado! / *Be prepared and enjoy your beach day!*

4. Tsunami Bulletins and Messages⁵⁸

Type of Message	Criteria*	Required Action
Tsunami Warning	<p>1-An earthquake of magnitude 7.1 or more occurs in the PTWC Area of Responsibility, at a depth of less than 100 kilometers (62 miles), located 300 km (186 mi) or less from Puerto Rico and the Virgin Islands.</p> <p>2- In the PTWC ADR there is an earthquake of magnitude 7.6 or more, at a depth of less than 100 kilometers (62 miles), located between 300 km (186 mi) at 1,000 km (621 mi) from Puerto Rico and the Virgin Islands.</p> <p>3- An earthquake occurs located more than 1,000 km (621 mi) from Puerto Rico and the Virgin Islands, whose magnitude is 7.9 or greater, at a depth of less than 100 kilometers (62 miles).</p>	<p>If a Tsunami Warning is issued, you must immediately move inland or search for height in a structure of more than four floors that has not been affected by the earthquake. It is essential to evict on foot and leave the flood zone in the least possible time.</p>
Tsunami Advisory	<p>1-In the PTWC ADR there is an earthquake of magnitude 6.5 to 7.09, at a depth of less than 100 kilometers (62 miles), located 300 km (186 mi) or less from Puerto Rico and the Virgin Islands.</p> <p>2- An earthquake occurs between 300 km (186 mi) to 1,000 km (621 mi) of Puerto Rico and the Virgin Islands, magnitude 7.1 to 7.59, at a shallower depth of 100 kilometers (62 miles).</p>	<p>If a Tsunami Advisory is issued it is recommended to leave the water and the beach, as there is a likelihood of strong currents and dangerous swell.</p>

⁵⁸ RSPR (2017) Guía para

Type of Message	Criteria*	Required Action
Tsunami Watch	3- An earthquake occurs located more than 1,000 km (621 mi) from Puerto Rico and the Isles	If a Tsunami Watch is issued, it is recommended to keep an eye on more information.
	Virgins, whose magnitude ranges from 7.6 to 7.9, to a depth less than 100 kilometers (62 miles).	
	1-A telesismic or distant earthquake occurs, located in the Atlantic basin.	
	2- More than three hours to arrive in a tsunami.	
	3- Some official institution indicates that a tsunami has formed that may affect	
	to the Caribbean in more than three hours.	
Bulletin	1-A distant ocean basin may be at risk.	If a Bulletin is issued it is recommended to be aware of more information.
	2- A distant earthquake occurs with estimated tsunami arrival times of more than	
	6 hours.	
	3- An earthquake located 500 km (311 mi) away from Puerto Rico or the	
	Virgins, with magnitude 4.0 or more, does NOT pose a tsunami threat.	
	4- An earthquake with magnitude 6.5 or more, at a depth of less than 100 kilometers (62 miles), does NOT meet the Warning or Warning criteria.	

Type of Message	Criteria*	Required Action
Tsunami Alert Cancellation	<p>5- An earthquake with magnitude 6.5 or more occurs, at a depth greater than 100 kilometers (62 miles).</p> <p>1-No tsunami detected in the epicentral area within an hour of occurring an earthquake.</p> <p>2- Sea behavior has returned to normal levels after a Tsunami.</p> <p>3- Tidal/DART indicates that no one-foot tsunami has been detected (0.3 meters) or more.</p> <p>4- Forecasts do not provide that a tsunami will be generated.</p>	<p>It is important that citizens are always aware of official information, as relevant agencies update messages as needed.</p> <p>Even if tsunami centers issue a cancellation, only competent authorities may declare an end to the emergency.</p> <p>Citizenship may return to evacuated areas when competent authorities have declared an end to the emergency.</p>

*- You do not have to meet all the criteria to activate a Bulletin or message type.

5. COVID-19 Prevention and Protection⁵⁹

How it spreads



There is currently no vaccine to prevent coronavirus disease 2019 (COVID-19).
The best way to prevent the disease is to avoid exposure to this virus.

It is believed that the virus spreads mainly from person to person.

- Between people who are in close contact (up to about 6 feet away).
- Through respiratory droplets that occur when an infected person coughs, sneezes or talks.
- These droplets may end up in the mouth or nose of those nearby or possibly inhaled and reach the lungs.
- Some recent studies suggest that COVID-19 may spread through people who have no symptoms.

All people should

Wash their hands frequently



Wash your hands often with soap and water for at least 20 seconds, especially after you've been in a public place, or after your nose licks, coughs or sneezes. It is of the utmost importance that you wash:

- Before eating or preparing food
- Before touching your face
- After going to the bathroom
- After leaving public places
- After your nose ingders, coughing or sneezing
- After handling his mask
- After changing diapers
- After caring for a sick person
- After touching animals or pets
- If you do not have soap and water, use a hand sanitizer containing at least 60% alcohol. Cover the entire surface of your hands and rub them until you feel dry.
- Avoid touching your eyes, nose and mouth without washing your hands.

⁵⁹ CDC (2020) Como protegerse y proteger a los demás. Center for Disease and Control. Extraído de <https://espanol.cdc.gov/coronavirus/2019-ncov/prevent-getting-sick/prevention.html>

Avoid direct contact



Inside your home: Avoid having contact with people who are sick.

- If possible, keep a distance of 6 feet between the sick person and other members of your household.

Outside your home: Keep a distance of 6 feet from people who don't live in your home.

- Remember that some people who don't have symptoms can spread the virus.
- Keep a distance of at least 6 feet (approximately the length of 2 arms) from others.
- Keeping distance from others is especially important for people who are most at risk of getting seriously ill.

Cover your mouth and nose with a mask when you're with other people



- You could pass on COVID-19 to others even if you don't feel bad.
- The goal of the mask is to protect others if they are infected.
- Everyone should wear a mask in public places and when they are with others who do not live in their home, especially when it is difficult to maintain other measures of social distancing.
- Children under 2 years of age, as well as people who are short of breath or who are unconscious, incapacitated or otherwise unable to remove the mask without help, should not wear a mask.
- DO NOT wear a mask for health care workers. Currently, surgical masks and N95 breathing masks are key supplies that should be reserved for health workers and emergency response personnel.
- Continue to maintain a distance of approximately 6 feet from others. The use of the mask does not replace social distancing.

Cover your nose and mouth by coughing and sneezing

- **Always cover your mouth and nose with a disposable handkerchief** when coughing or sneezing or cover yourself with the inside of your elbow and do not spit.
- **Throw used disposable handkerchiefs** in the trash.
- **Wash your hands immediately with soap and water** for at least 20 seconds. If you do not have soap and water, wipe your hands with a hand sanitizer containing at least 60% alcohol.

Maintain Constant Monitoring of Your Health



- Watch for symptoms. Watch for fever, cough, shortness of breath, or other symptoms of COVID-19.
- It is extremely important whether you should make essential errands, go to the office or workplace, and in environments where it might be difficult to maintain the physical distance of 6 feet.
- Check your temperature for symptoms.
- Do not control your temperature within 30 minutes of exercising or after taking medicines that may lower your temperature, such as acetaminophen.
- Follow the CDC's guide if you have symptoms.

Protect your health this flu season

There is a **likelihood that** both types of viruses, both influenza and COVID-19 virus, will spread this fall and winter. Health care systems may be exceeded if patients should be treated with both influenza and COVID-19. This means that getting vaccinated against influenza in the 2020-2021 season is more important than ever.

While getting vaccinated against influenza doesn't protect you from COVID-19, it has many important benefits:

- Influenza vaccines have been shown to reduce the risk of influenza, hospitalization and death from influenza.
- In addition, getting vaccinated against influenza preserves health care resources so that they can care for patients with COVID-19.

6. EPA National Priority List

Facility	EPA #	Address	Contact
<u>BASF</u> <u>Agricultural</u> <u>Products of</u> <u>Puerto Rico</u>	PRD0910651 02	State Road #2 km 47.3 Manati, PR 00674	Mr. Angel Salgado U.S Environmental Protection Agency, Region 2 Caribbean Environmental Protection Division 48 Carr. 165, Suite 7000, City View Plaza Guaynabo, PR 00986-8073 Phone: (787) 977-5854 Email: salgado.angel@epa.gov
<u>Boricua Wood</u> <u>Processing</u> <u>Incorporated</u>	PRD0905644 77	State Road 865, km 5.5 Toja Baja, PR 00949	Ms. Zoylmar Luna U.S Environmental Protection Agency, Region 2 Caribbean Environmental Protection Division 48 Carr. 165, Suite 7000, City View Plaza Guaynabo, PR 00986-8073 Phone: (787) 977-5844 Email: luna.zoylmar@epa.gov
<u>Bristol-Myers</u> <u>Squibb</u> <u>Manufacturing</u> <u>Company</u>	PRD0900210 56	State Road 3, km 77.5 Humacao, PR 00791	Mr. Socorro Martinez U.S Environmental Protection Agency, Region 2 Caribbean Environmental Protection Division 48 Carr. 165, Suite 7000, City View Plaza Guaynabo, PR 00986-8073 Phone: (787) 977-5886 Email: martinez.socorro@epa.gov
<u>Buckeye</u> <u>Caribbean</u> <u>Terminals</u>	PRD0900740 71	Route 901, km. 2.7	Mr. Jesse Avilés U.S Environmental Protection Agency, Region 2

Facility	EPA #	Address	Contact
		Yabucoa, PR 00767	Caribbean Environmental Protection Division 48 Carr. 165, Suite 7000, City View Plaza Guaynabo, PR 00986-8073 Phone: (787) 977-5882 Email: aviles.jesse@epa.gov
<u>Chevron Phillips Chemical Puerto Rico Core</u>	PRD9912919 72	Route 710, km 1.3, Las Mareas Guayama, PR 00963	EPA Contact: Zolymer Luna, Phone: (787) 977-5844 Email: luna.zolymer@epa.gov CPCPRC Contact: Mrs. Paula Mrozek Phone: (832)-813-4416 Email: MROZEP@cpchem.com
<u>Caribe General Electric Products Incorporated Juana Diaz</u>	PRD0902827 57	State Road 149, km 67 Juana Diaz, PR 00795	Mr. Jesse Aviles U.S Environmental Protection Agency, Region 2 Caribbean Environmental Protection Division 48 Carr. 165, Suite 7000, City View Plaza Guaynabo, PR 00986-8073 Phone: (787) 977-5882 Email: aviles.jesse@epa.gov
<u>Caribe General Electric Product, Rio Piedras</u>	PRD0006925 90	La Brisa Street #5, Sabana Llana Industrial Park Rio Piedras, PR 00924	Mr. David N. Cuevas Ph.D. U.S Environmental Protection Agency, Region 2 Caribbean Environmental Protection Division 48 Carr. 165, Suite 7000, City View Plaza Guaynabo, PR 00986-8073 Phone: (787) 977-5856 Email: cuevas.david@epa.gov
<u>Commonwealth Oil And</u>	PRD0910172 28	Route 127, B.O. Talla	Mr. Eduardo Gonzalez U.S Environmental Protection

Facility	EPA #	Address	Contact
<u>Refining Company Incorporated (CORCO)</u>		Boa Peñuellas, PR 00624	Agency, Region 2 Caribbean Environmental Protection Division 48 Carr. 165, Suite 7000, City View Plaza Guaynabo, PR 00986-8073 Phone: (787) 977-5839 Email: gonzalez.eduardo@epa.gov
<u>Compaq Computer Corporation</u>	PRD0007063 33	Sabana Grande Industrial Waste Site BO. Torre, PR 00637	Mr. Luis Negron U.S Environmental Protection Agency, Region 2 Caribbean Environmental Protection Division 48 Carr. 165, Suite 7000, City View Plaza Guaynabo, PR 00986-8073 Phone: (787) 977-5855 Email: luis.negron@epa.gov
<u>GE Industrial of Puerto Rico L.L.C., Vieques Plant</u>	PRD0006925 82	Intersectio n of Rd 200 and Rd 201 Vieques, PR 00765	Mr. Jesse Avilés U.S Environmental Protection Agency, Region 2 Caribbean Environmental Protection Division 48 Carr. 165, Suite 7000, City View Plaza Guaynabo, PR 00986-8073 Phone: (787) 977-5882 Email: aviles.jesse@epa.gov
<u>GE Industrial of PR, L.L.C.</u>	PRD0904921 09	State Road 3, km 122.9 Patillas, PR 00723	Mr. Jesse Avilés U.S Environmental Protection Agency, Region 2 Caribbean Environmental Protection Division 48 Carr. 165, Suite 7000, City View Plaza Guaynabo, PR 00986-8073 Phone: (787) 977-5882 Email: aviles.jesse@epa.gov

Facility	EPA #	Address	Contact
<u>GE Residential Products Incorporated</u>	PRD090510793	Km. 0.5 State Road 191 Palmer Ward Municipality of Rio Grande, PR 00721	Mr. Eduardo Gonzalez U.S Environmental Protection Agency, Region 2 Caribbean Environmental Protection Division 48 Carr. 165, Suite 7000, City View Plaza Guaynabo, PR 00986-8073 Phone: (787) 977-5839 Email: gonzalez.eduardo@epa.gov
<u>Heritage Environmental Services PR, L.L.C.</u>	PRD091024786	3080 Avenida Hostos Mayaguez PR 00680	Mr. Angel Salgado U.S Environmental Protection Agency, Region 2 Caribbean Environmental Protection Division 48 Carr. 165, Suite 7000, City View Plaza Guaynabo, PR 00986-8073 Phone: (787) 977-5854 Email: salgado.angel@epa.gov
<u>Merial Barceloneta, L.L.C.</u>	PRD090028101	State Road # 2, Km 56.7 Barceloneta, PR 00617	Mr. Angel Salgado U.S Environmental Protection Agency, Region 2 Caribbean Environmental Protection Division 48 Carr. 165, Suite 7000, City View Plaza Guaynabo, PR 00986-8073 Phone: (787) 977-5854 Email: salgado.angel@epa.gov
<u>Naval Activity Puerto Rico</u>	PR2170027203	Naval Station Roosevelt Roads Ceiba, PR 00735	Ms. Jessica Mollin U.S Environmental Protection Agency, Region 2 ERRD-SPB-FFS 290 Broadway New York, NY 10007-1866

Facility	EPA #	Address	Contact
			Phone: (212) 637-3921 Email: mollin.jessica@epa.gov
<u>Omark Caribbean Incorporated</u>	PRD0900380 92	88-90 Street D, Minillas Industrial Park Bayamon, PR 00957	Mr. Jesse Avilés U.S Environmental Protection Agency, Region 2 Caribbean Environmental Protection Division 48 Carr. 165, Suite 7000, City View Plaza Guaynabo, PR 00986-8073 Phone: (787) 977-5882 Email: aviles.jesse@epa.gov
Penuellas Technology Park, L.L.C.	PRD9805946 18	Road 127, km 17.3, BO. Tallaboa Peñuellas, PR 00624	Mr. Luis Negron U.S Environmental Protection Agency, Region 2 Caribbean Environmental Protection Division 48 Carr. 165, Suite 7000, City View Plaza Guaynabo, PR 00986-8073 Phone: (787) 977-5855 Email: luis.negron@epa.gov
<u>Pfizer Pharmaceutica ls, L.L.C.</u>	PRD0903980 74	Highway No. 2, km 60.0 Arecibo, PR 00612	Mr. Eduardo Gonzalez U.S Environmental Protection Agency, Region 2 Caribbean Environmental Protection Division 48 Carr. 165, Suite 7000, City View Plaza Guaynabo, PR 00986-8073 Phone: (787) 977-5839 Email: gonzalez.eduardo@epa.gov
<u>PPG Industries Caribe</u>	PRD0006927 15	PR Route 127 Guayanilla	Mr. Luis Negron U.S Environmental Protection Agency, Region 2 Caribbean Environmental

Facility	EPA #	Address	Contact
		, PR 00659	Protection Division 48 Carr. 165, Suite 7000, City View Plaza Guaynabo, PR 00986-8073 Phone: (787) 977-5855 Email: luis.negron@epa.gov
<u>Puma Energy Caribe, L.L.C.</u>	PRD0006321 82	Luchetti Industrial Park, PR Route 28 Bayamon, PR 00961	Mr. David N. Cuevas Ph.D. U.S Environmental Protection Agency, Region 2 Caribbean Environmental Protection Division 48 Carr. 165, Suite 7000, City View Plaza Guaynabo, PR 00986-8073 Phone: (787) 977-5856 Email: cuevas.david@epa.gov
<u>TAPI Puerto Rico Incorporated</u>	PRD0906133 57	Carr #3, Km. 143.0 Guayama, PR 00784	Mr. Jesse Avilés U.S Environmental Protection Agency, Region 2 Caribbean Environmental Protection Division 48 Carr. 165, Suite 7000, City View Plaza Guaynabo, PR 00986-8073 Phone: (787) 977-5882 Email: aviles.jesse@epa.gov
<u>Thermo King De Puerto Rico Incorporated</u>	PRD0904979 59	B Street, Zeno Gandía Industrial Park, Hato Abajo Arecibo, PR 00612	Mr. Luis Negron U.S Environmental Protection Agency, Region 2 Caribbean Environmental Protection Division 48 Carr. 165, Suite 7000, City View Plaza Guaynabo, PR 00986-8073 Phone: (787) 977-5855 Email: luis.negron@epa.gov

Facility	EPA #	Address	Contact
<u>Warner Chilcott Company</u>	PRD0006928 14	State Road 195, Km 1.2, Puerto Real Fajardo, PR 00738	Mr. David N. Cuevas Ph.D. U.S Environmental Protection Agency, Region 2 Caribbean Environmental Protection Division 48 Carr. 165, Suite 7000, City View Plaza Guaynabo, PR 00986-8073 Phone: (787) 977-5856 Email: cuevas.david@epa.gov

7. Puerto Rico Hospitals

Hospitals	DIESEL Capacity	Beds	Morgue	Address	Telephone	Contact
HOSPITAL PAVIA ARECIBO (HOSPITAL DR CAYETANO COLL Y TOSTE)	6,000	230	23	PR-129 KM 0.7 AVE SAN LUIS, Arecibo, PR 00613	(787) 650-7272	Ivan Jimenez
HOSPITAL METROPOLITANO DR. SUSONI, PAVIA	2,000	138	N	CALLE PALMA 55, Arecibo, PR 00612	(787) 650-1030	Edgardo Colón
HOSPITAL CASTAÑER	775	33	N	PR-135 KM 4.5, Castañer, Lares, PR 00631	(787) 829-5010	Josue Romero
HOSPITAL DOCTORS CENTER, MANATI	17,200	250	3	Carr. 2 Km.47.7 Manatí, PR 00674	(787) 854-3322	Wanda Rosado
MANATI MEDICAL CENTER DR OTERO LOPEZ	10,000	283	4	Calle Hernández Carrión Urb. Atenas Carr # 668, Manatí, PR 00674	(787) 621-3700	Luis Lopez
HEALTHSOUTH REHABILITATION HOSPITAL OF MANATÍ	2,000		N	Hospital Doctors Center, Carr. Estatal PR-2, Km. 47.7, Manatí 00674	787-621-3800	Sr. Jorge Caballero
HOSPITAL METROPOLITANO DE LA MONTAÑA UTUADO, PAVIA	1,000	90	1	Calle Isaac González Martínez, Esquina Ledesma Utuado, P.R 00641	(787) 933-1100	Aileen Rivera
CENTRO MEDICO WILMA N. VÁZQUEZ	2,000	130	2	Carr. 2 Km. 39.5 Vega Baja, PR 00693	(787) 858-1580	Maria Siragusa

Hospitals	DIESEL Capacity	Beds	Morgue	Address	Telephone	Contact
DOCTORS CENTER HOSPITAL (MATILDE BRENES)- BAYAMON	1,500	134	1	Calle J-9 Extensión Hermanos Dávila Bayamón P.R. 00960	(787) 622-5420	Sra. Lizette Arroyo Vazquez
HIMA SAN PABLO BAYAMÓN	30,000	421	2	Calle Santa Cruz #70, Urb. Santa Cruz, Bayamón, PR 00960	(787) 620-4762	Ivelisse Figueroa
HOSPITAL HERMANOS MELENDEZ	4,000	274	2	Carr. 2 Km.11.7 Bayamón, PR 00959	787-620-8181	Lcda. María T. Machado, adminidstradora
HOSP UNIVERSITARIO DR RAMON RUIZ ARNAU	6,000	415	0	Ave. Laurel #100, Urb. Santa Juanita, Bayamón P.R. 00956	(787) 787-5151	Yaritza Custodio
PUERTO RICO CHILDRENS HOSPITAL INC	4,000	127	0	Carr. #2 K.M. 11.7 interior Bo. Pájaros, Bayamón P.R. 00960	(787) 474-8282	Wanda Ortiz
HOSPITAL PSIQUIATRICO DE NINOS Y ADOLESCENTES	6,000	28	0	HURRA		Juan Irene
CENTRO MÉDICO CORRECCIONAL DE BAYAMON	9,200	195	0	Carr. #5 Ave. Central Juanita Final Bayamón, P.R. 00960	(939) 225-2400	José A. Rodríguez Pagán
HOSPITAL MENONITA GENERAL DE AIBONITO	10,000	150	0	Calle José C. Vázquez, Carretera Estatal #726 Urb. Vila	(787) 735-8001	Manuel Flores

Hospitals	DIESEL Capacity	Beds	Morgue	Address	Telephone	Contact
				Rosales Aibonito, PR 00705		
HIMA SAN PABLO CAGUAS	65,562	390	6	Ave Luis Muñoz Marín, Lote 100 Urb. Maria Olga, Caguas, PR 00726	(787) 653-3434	Nilda Rodríguez Figueroa
HOSPITAL GENERAL MENONITA CAGUAS (antes-SAN JUAN BAUTISTA MEDICAL CENTER)	5,000	337	4	PR-172 URB TURABO GARDENS (SALIDA 21 CAGUAS A CIDRA)00725	(787) 653-0550	Mei-Ling González
HOSPITAL CENTRO MEDICO MENONITA DE CAYEY	40,000	262	0	PR-14, INFERIOR BARRIO RINCON SECTOR LOMAS, CAYEY PR 00736	(787) 535-1001	Ana Morales
FIRST HOSPITAL PANAMERICANO	10,700	165	0	PR-787 KM 1.5, Cidra, PR 00739	(787) 739-5555	Liza Delgado
HOSPITAL ORIENTE INC., DR DOMINGUEZ	2,400	71	2	Ave. Font Martelo #300, Humacao, PR 00791	787-852- 0505	Josué Rodríguez
HOSPITAL RYDER MEMORIAL	6,000	200	4	Ave Font Martelo # 355, Humacao, PR 00791	(787) 852-0768	Edgardo Gonzalez
HOSPITAL HIMA HUMACAO	1,500	105	2	Ave. Font Martelo #3, Humacao, PR 00971	(787) 656-2424	Lcda. Jennie Meléndez

Hospitals	DIESEL Capacity	Beds	Morgue	Address	Telephone	Contact
CARIBBEAN MEDICAL CENTER	950	39	2	Ave. Osvaldo Molina #151 Fajardo, P.R 00138	(787) 801-0081	Lcda. Patricia De-Frías Tejada
HIMA SAN PABLO FAJARDO		180	3	PR-3 KM 48.4 AVE GENERAL VALERO 404 SECTOR MEDIA LUNA, FAJARDO PR 00738	787-655-0505	Carmen Rivera Dipini
HealthproMed	300		0	Calle William Font Final	(787) 742-0001	
CDT Susana Centeno	6,000		0	Carr. # 997, Km 0.1, Bo. Destino, Vieques, Puerto Rico	Carr. # 997, Km 0.1, Bo. Destino, Vieques, Puerto Rico	Lic. Dora Berenguer
HOSPITAL BUEN SAMARITANO DE AGUADILLA		230	12	Carr. 2 Km.141.1, Ave. Severiano Cueva #18, Bo. Caimital Bajo, Ave. Kennedy, Aguadilla, PR 00603	(787) 658-0000	Frances Alvarado
HOSPITAL METROPOLITANO PSIQUIÁTRICO DE CABO ROJO, PAVIA		108	3	Avenida Muñoz Rivera #108 Cabo Rojo, P.R. 00623	787-851-2025	Walberto Martínez Aponte
MAYAGUEZ MEDICAL CENTER, HOSP DR RAMON EMETERIO BETANCES		80	0	PR-2 KM 15.7 AVE HOSTOS 410, Bo. Sábalo	(787) 652-9200	Zedrick Guzman

Hospitals	DIESEL Capacity	Beds	Morgue	Address	Telephone	Contact
				Mayagüez, PR 00681		
HOSPITAL BELLA VISTA	4,000	391	6	Carr. 349 Km. 2.7 Cerro Las Mesas Mayagüez, P.R. 00680	(787) 834-6000 (787) 834-2350	Domingo Vives Moreno
HOSPITAL DR. PEREA, PAVIA	2,750	224	2	Calle DR. Barsora # 15, Mayaguez, PR 00680	(787) 834-0101	Zaida Sosa
HOSPITAL SAN ANTONIO		143	1	Calle Dr. Ramon Emeterio Betances 18 Norte, Mayaguez, PR 00680	(787) 834-0050	Carlos Denizard
HOSPITAL SAN CARLOS BORROMEIO		75	3	PR-110 KM 12.2 CALLE CONCEPCION VERA AYALA #550, Moca, PR. 00676	787-877-8000	José M. González
HOSPITAL DE LA CONCEPCION		187	3	PR-2 KM 174.3 INTERIOR, CALLE LUNA 41, BO CAIN ALTO, San German PR 00683	(787) 892-1860	Ing. Sonia Medina
HOSPITAL METROPOLITANO DE SAN GERMAN, PAVIA	500	82	2	Calle Javilla 8 San Germán, PR 00683	(787) 892-5300	Astrid Piñero
HOSPITAL UPR CAROLINA DR. FEDERICO TRILLA	2,000	250	5	Ave 65 Infantería Carr. 3 Km.8.3	(787) 757-1800	Sra. Catherine Abreu

Hospitals	DIESEL Capacity	Beds	Morgue	Address	Telephone	Contact
				Carolina, PR 00984		
DOCTORS' CENTER HOSPITAL SAN FERNANDO DE CAROLINA	10,800	109	6	Edificio Jesús T. Piñeiro Calle Fernández Juncos Esq. Molinillo Carolina PR 00984	787-626- 3322	Christ Alvarez
PROFESSIONAL HOSPITAL, PAVIA	2,000	54	0	Carr. 199 KM 1.0 Avenida las Cumbres, Guaynabo, P.R. 00969	787-708- 6560	Sr. Nefatlí Ortega
HOSPITAL DEL MAESTRO	2,500	255	2	Calle Sergio Cuevas Bustamante # 550 Hato Rey PR, 00918	(787) 758-8383	Jaime Cintrón
SISTEMA SAN JUAN CAPESTRANO	2500	208	0	CARR PR-877 KM 1.6 CAMINO LAS LOMAS Rio Piedras, 00926	(787) 625-2900	Ing. Ángel Amaral
ADMINISTRACIÓN DE SERVICIOS MÉDICOS DE PUERTO RICO (ASEM) [HOSP CUIDADO AGUDO ESPECIALIZADO POLITRAUMATIZADOS]	40,000	52	68	Carr. 21 , Barrio Monacillos Centro Médico Río Piedras, P.R.00922	(787) 777-3535	Betsy Rosado
ASHFORD PRESBYTERIAN COMMUNITY HOSPITAL INC	12,000	179	2	Ave. Ashford #1451 Condado, PR 00907	(787) 721-2160	Ms. Dorimar Morales

Hospitals	DIESEL Capacity	Beds	Morgue	Address	Telephone	Contact
CENTRO CARDIOVASCULAR DE PR Y DEL CARIBE DR. RAMÓN M. SUÁREZ CALDERÓN	recurso ASEM	202	2	Carr. 21 , Barrio Monacillos Centro Médico Río Piedras, P.R.00922	(787) 754-8500	Carmen Flores (Marta Narvaez, secretaria)
DOCTORS CENTER HOSPITAL SAN JUAN	2,000	154	2	Calle San Rafael #1395 San Juan, PR 00909	(787) 999-7620	Elizabeth Ramos Lynn
HEALTH SOUTH REHABILITATION HOSPITAL OF SAN JUAN	5,000	32	0	3er piso Hospital Universitario, Barrio Monacillos Centro Médico Río Piedras, P.R.00936	(787) 274-5100	Katheryn Lopez
HOSPITAL INDUSTRIAL C.F.S.E.	500	258	Utilizan recursos de ASEM	Carr. 22 Barrio Monacillos Centro Médico, Río Piedras, PR 00936	(787) 754-2525	Jorge Serrano
HOSPITAL METROPOLITANO DE SAN JUAN, PAVIA	4,000	180	2	Carr. 21 Urb. Las Lomas #1785, Río Piedras PR 00928	(787) 782-9999	Ivette Pérez
HOSPITAL MUNICIPAL DE SAN JUAN DR RAFAEL LOPEZ NUSSA	2,500	450	Utilizan recursos de ASEM	Barrio Monacillos Centro Médico Río Piedras, P.R. 00928	(787) 480-2700	Jesús Rivera

Hospitals	DIESEL Capacity	Beds	Morgue	Address	Telephone	Contact
HOSPITAL ONCOLÓGICO DR. ISAAC GONZÁLEZ MARTÍNEZ	500	143	3	Barrio Monacillos Centro Médico, Río Piedras PR 00935	(787)763-4149 (787)765-2382	Anna W. Mariani
HOSPITAL PAVÍA DE HATO REY	6000	242	0	Ave. Ponce De León 435 Hato Rey, PR 00917	(787) 641-2323	Laura Rodriguez
HOSPITAL PAVIA SANTURCE	10,000	247	2	Calle Profesor Augusto Rodríguez #1462 , Santurce, PR 00910	(787) 641-1616	Sr. Juan Borges
HOSPITAL PEDIÁTRICO UNIVERSITARIO DR. ANTONIO ORTÍZ	1,500	215	Utilizan recursos de ASEM	Carr. 21, Barrio Monacillos, Centro Médico Río Piedras, PR 00922	(787) 474-0333	Maria Esther Centeno y Dra. Pumarejo (Directora Pediatria)
HOSPITAL PSIQUIÁTRICO FORENSE	recurso ASEM	168	0	Calle Teniente César González 1106 Río Piedras, PR 00926	(787) 758-8019	Sargento. Miguel Reyes
HOSPITAL DE PSIQUIATRÍA DR. RAMÓN FERNÁNDEZ MARINA DE PR	recurso ASEM	200	0	Calle Maga Barrio Monacillos Centro Médico, Río Piedras, PR 00928	787-766-4646	Carlos Pérez
HOSPITAL SAN FRANCISCO , PAVIA	2,0000	160	2	Calle De Diego #371	(787) 767-5100	María Colón

Hospitals	DIESEL Capacity	Beds	Morgue	Address	Telephone	Contact
				Río Piedras, PR 00923		
HIMA SAN PABLO CUPEY (HOSPITAL SAN GERARDO)	2,000	60	2	Carr. 844 Km. 0.5 Cupey Bajo, RIO PIEDRAS PR 00926	(787) 761-8383	Ing. Lourdes del Valle
HOSPITAL UNIVERSITARIO DE ADULTOS	recurso ASEM	390	Utilizan recursos de ASEM	Carr. 21, Barrio Monacillos, Centro Médico, Río Piedras, PR 00922	(787) 754-0101	Maria Maritza Torres Rivera (new)
HOSPITAL AUXILIO MUTUO	32,000	685	4	Ave. Ponce de León Parada 37 ½ Hato Rey, PR 00919	(787) 758-2000	Vivian Silva
HOSPITAL PSIQUIATRÍA FORENSE DE RÍO PIEDRAS (ASSMCA)		54	0	Calle Teniente César González 1106, Río Piedras, PR 00926	(787) 758-8019	Lcda. Lizzette Díaz
SAN JORGE CHILDREN'S HOSPITAL	1,500	167	0	Calle San Jorge #258 Santurce, PR 00912	(787) 727-1000	Lcda. María Jossie Rodríguez
SJ VETERANS ADMINISTRATION MEDICAL CENTER	72,900	476	12	Bo. Monacillos Calle Casia #10 San Juan, PR 00921	(787) 641-7582	Jose Colon Colon; Cosme Torres
HOSPITAL MENONITA SAN LUCAS DE GUAYAMA (CRISTO REDENTOR)	11,000	161	2	Ave. Pedro Albizu Campos Calle Principal Urb.	(787) 866-1645	Ing. Francisco Amador (new)

Hospitals	DIESEL Capacity	Beds	Morgue	Address	Telephone	Contact
				La Hacienda, Guayama, PR 00785		
HOSPITAL DAMAS	11,750	331	4	Carr # 2 Ponce By Pass, Ponce PR 00717	(787) 840-8686	David Colberg
HOSPITAL METROPOLITANO DR. MANUEL DE LA PILA IGLESIAS, PAVIA	2,500	203	4	Ave. Las Americas #2435 Boulevard Luis A Ferrer, Ponce PR 00717	(787) 848-5600	Héctor Berríos
HOSPITAL EPISCOPAL SAN LUCAS II	7,000	427	6	PR-14 AVE TITO CASTRO 917, Ponce PR 00733	(787) 844-2080	Antonia Rosario
HOSPITAL PSIQUIATRÍA FORENSE DE PONCE	150	150	0	PR-14 KM 4.2, Bo. Machuelo, Ponce, PR 00731	(787) 844-0101 (787)844- 0210	Diana González
HOSPITAL SAN CRISTÓBAL	7,000	138	2	Carr. 506, KM 1.1 Bo. Coto Laurel, Ponce PR. 00780	(787) 848-2100	José Mattei
HOSPITAL PAVIA YAUCO (ANTIGUO METROPOLITANO DR. TITO MATTEI)	6,500	216	3	PR-128 KM 1.0, YAUCO, PR 00698	(787) 856-1000	Ing. Miguel Feliciano

ANNEX TO

Operational Procedures for RPTC

Operational Procedures for an Earthquake

The Plan

The Operational Earthquake Plan of Puerto Rico (OEP) is structured in three Operational Phases. Phase I provides for a continuous cycle of Preparedness and Mitigation activities throughout the year. In Phase I the operations continue normal.

This Annex specifies the functions, tasks, responsible agency, necessary resources, limitations and contingencies to be able to carry out the Operational objectives during a major earthquake. The following table of contents identifies the Operational objectives set out in this plan.

Table of Contents of Operational Objectives

- I. Operational Structure
- II. Activation of Resources Logistics
- III. State of the Situation and Public Information
- IV. Activation of Shelters "Open Camps"
- V. Providing Safety to Responders - "Safety"
- VI. Damage Assessment
- VII. Environmental response
- VIII. Search and Rescue Operations SAR
- IX. Mass care
- X. Medical Surge and Mass Casualties
- XI. Operational Response
- XII. Restoration of Public Services
- XIII. Restoring Critical Infrastructure
- XIV. Recovery of the Economy
- XV. Federal support

INSTRUCTIONS

Annex contains Phase II which are subdivided into sub-phases 2A, 2B and 2C and Phase III which includes recovery efforts. For each task in this plan, time/period criteria, Operational objectives, ESF, responsible agency, support agency, limitations and contingencies have been established.

Limitations are the potential difficulties that may affect the performance of assigned tasks. In order to implement the RPTC you will be able to identify the phases of the emergency, the Operational objectives, the functions and tasks of your agency that have been predetermined and/or suggested according to the circumstances. In addition, this plan provides a possible contingency for each problem or limitation identified in the plan.

Phase 2 A (0 x +24H)

TIME	OPERATIONAL OBJECTIVES	TASK	ESF	AGENCY PRIMARY	AGENCY SUPPORT	LIMITING	CONTINGENCY
0 +2H	Activation/ Operational Structure	The OEP automatically activates when an earthquake occurs	ALL	ALL	ALL	N/A	N/A
0 +2H	Operational response	At the beginning of the earthquake Don't Run, Drop, Cover yourself under a strong object and Hold on.	ALL	ALL	ALL	N/A	N/A
0 +2H	Operational response	Once the earthquake has passed do not leave until it is safe to do so and head to the established meeting area.	ALL	ALL	ALL	No meeting place established	Direct people to an open area away from the building, power lines, and other objects that might fail.
0 +2H	Operational response	When you get to the assembly point, count how many people got out.	ALL	ALL	ALL	There is no list of staff who were in the building	Ask people if any co-workers have not reached the meeting point and ask where they last saw him.
0 +2H	Operational response	If the Seismic Network offices are Operational, they will send the earthquake-related information to PREMB. E.g.; Magnitude, epicenter and whether or not there is tsunami warning for Puerto Rico.	5	RSPR	PREMB	The Seismic Network cannot operate or has no communication	Continue the emergency response protocols of this plan. Municipalities with EMWIN may receive direct notification. PREMB must send the information it receives to Municipalities.

TIME	OPERATIONAL OBJECTIVES	TASK	ESF	AGENCY PRIMARY	AGENCY SUPPORT	LIMITING	CONTINGENCY
0 +2H	Operational response	PREMB communicates with the Puerto Rico Seismic Network to obtain information about the earthquake and confirm whether or not there is a tsunami warning.	5	PREMB	RSPR	The Seismic Network cannot operate or does not have Communications	Continue with OEP protocols
0 +2H	ICS/EOC Operational Structure	Activate the <i>Incident Command System (ICS)</i>	ALL	ALL	ALL	N/A	N/A
0 +2H	Public Information and <i>Data Sharing</i>	Using the available communication systems, begin sending situation reports to PREMB.	ALL	ALL	ALL	N/A	N/A
0 +2H	Public Information and <i>Data Sharing</i>	Using the available media, send a status and risk message to the public. Activate Emergency Alert system (EAS) Incident Public Alert Warning System (IPAWS). The message will include the status of the situation, earthquake-related information, protective measures, life-saving measures and any other information relevant to the incident. Send these messages every hour.	5	PREMB	DSP GOVERNOR'S OFFICE	N/A	N/A

TIME	OPERATIONAL OBJECTIVES	TASK	ESF	AGENCY PRIMARY	AGENCY SUPPORT	LIMITING	CONTINGENCY
0 +2H	Search and Rescue Operations	If the structure does not represent signs of structural damage, you can begin life-saving tasks and rescue co-workers trapped under some piece of furniture, equipment, or structure.	ALL	ALL	ALL	The vast majority of his companions will be in a state of shock and will not be able to respond.	Identify the people who are best able to begin life-saving tasks in the workplace.
0 +2H	Operational response	Check for fires in the structure and extinguish them before entering.	ALL	ALL	ALL	No fire-fighting equipment available	Do life-saving and rescue work where there is no fire.
0 +2H	Mass casualties	Establish a "Cold" Zone to mobilize the wounded and use a process of patient discernment. Ex: START (Simple Triage and Rapid Treatment) TRIAGE.	ALL	ALL	ALL	Staff are not familiar with the START TRIAGE system	Classify the wounded depending on the severity of their injuries. Emphasize people with better expectations of survival.
0 +2H	Operational response	Open all the traffic access of the building to allow the entry and exit of emergency units or people who will leave the facilities to look for their relatives.	ALL	ALL	ALL	N/A	N/A
0 +2H	Activation of Resources	Notify the Emergency Service 9-1-1 about the situation at your facility and request assistance.	ALL	ALL	ALL	No communication with 9-1-1	Try calling through a satellite phone. Send a TEXT to 9-1-1 indicating your situation.

TIME	OPERATIONAL OBJECTIVES	TASK	ESF	AGENCY PRIMARY	AGENCY SUPPORT	LIMITING	CONTINGENCY
0 +2H	Environmental response	If a spill or leakage of some kind of hazardous material occurs in your facility mobilize employees and visitors to at least 1,000 feet away from the building and make sure they are in Up wind getting away from the incident. Create a security perimeter.	ALL	ALL	ALL	He doesn't know where the wind is blowing	Look at the smoke or dust in the environment. Head in the opposite direction from where the smoke or dust is moving.
0 +2H	Activation of Shelters/camps	Identify an open area that serves as an Open Camp near the facility to be used as a rest area and wait for employees and visitors.	ALL	ALL	ALL	N/A	N/A
0 +2H	Federal support	FEMA activates its Catastrophic Incident Plan for Puerto Rico. The plan states that a process of coordinating "Push" resources to Puerto Rico begins for the first 72 hours.	18	FEMA	DOD	N/A	N/A
0 +2H	Operational response	Suspend services to the Public visiting facilities and provide medical assistance if necessary. Mobilize visitors to a safe area once the earthquake is over.	ALL	ALL	ALL	N/A	N/A
0 +2H	Operational response	Consider that there are people infected with COVID-19. Use the basic Personal Protective Equipment.	ALL	ALL	ALL	N/A	N/A

TIME	OPERATIONAL OBJECTIVES	TASK	ESF	AGENCY PRIMARY	AGENCY SUPPORT	LIMITING	CONTINGENCY
0 +2H	Operational response	Activate NCBPR fire-fighting resources in critical and high-risk locations.	4	NCBPR	PREMB PRASA	There are no personnel or personnel has left the stations.	Send available resources to the most critical areas
0 +2H	OPS Response	The public will move to the designated Assembly locations in the event of Tsunami.	ALL	ALL	ALL	People don't know where their place of assembly is	The staff of the municipality or agencies direct people. See signs
0 +2H	Operational response	In the coastal municipalities OMME reports to the places of Assembly.	5	OMME	PREMB	OMME can't get there	CERT, Community groups will be in charge
0 +2H	Communications	Communications use 100 watt VHF radios with repeater. Make a Relay with local channels through another Municipality.	5	OMME	PREMB	The radio doesn't work	Use conventional frequencies or satellite system. Activate to Amateur Radio
0 +2H	Communications	Use satellite Internet system already installed in the OMME for status.	5	OMME	PREMB	The satellite system is not working	Coordinate with PREMB to establish a communications relay process.
0 +2H	EOC/ICS	Activation of all EOCs of state agencies	ALL	ALL	ALL	The EOCs of the agencies are not functional	Move your emergency operations to another agency with sufficient space and secure structure

TIME	OPERATIONAL OBJECTIVES	TASK	ESF	AGENCY PRIMARY	AGENCY SUPPORT	LIMITING	CONTINGENCY
0 +2H	Operational response	Hospitals must make an immediate assessment of their Operational conditions and determine whether their infrastructure is secure as aftershocks will continue. They'll decide whether or not to evacuate the patients.	8, 17	PRDOH	BEOC	No engineering staff to evaluate the hospital	The person in charge will make the evacuation decision.
0 +2H	Operational response	Correctional officers will assess the damage and condition of the inmates after the earthquake. You will contact your supervisor to take appropriate action. The RCU will activate its Emergency Operational Plan	13	DOC	NPPR	N/A	N/A
0+2H	Risk Communication	Activate the Integrated Public Alert System (IPAWS) and the Emergency Alert System (EAS)	5, 15	NWS	PREMB	N/A	N/A
0+2H	Operational response	Stabilize the scene once the wounded have been treated with first aid.	ALL	ALL	ALL	There is no equipment or personnel that knows first aid in the facilities.	Cover open wounds and stop bleeding. Call 9-1-1.

TIME	OPERATIONAL OBJECTIVES	TASK	ESF	AGENCY PRIMARY	AGENCY SUPPORT	LIMITING	CONTINGENCY
+4H	Public Information and <i>Data Sharing</i>	Using the available means of communication, send a status and risk message. The message will include the status of the situation, earthquake-related information, protective measures, life-saving measures and any other information relevant to the incident. Send these messages every hour. Use EAS and IPAWS	5	PREMB	DSP GOVERNOR'S OFFICE	N/A	N/A
+4H	Damage Assessment	Evaluate if the facility is stable and does not represent a danger of collapse. Carry out a preliminary visual inspection of the structure to public facilities, schools, tunnels and bridges.	ALL	ALL	ALL	No structural engineer present or someone qualified	Do not approach the building if you see broken columns or collapsed floors.
+4H	Damage Assessment	Evaluate the conditions of your Emergency Operations Center (Communications, Energy and Water). Determine if it is safe to operate from that location.	ALL	ALL	ALL	Your EOC is NOT Operational	Activate your COOP Plan. Activate your Alternate EOC. Activate your <i>Emergency Relocation Group</i> .
+4H	Damage Assessment	(CONT) Evaluate the conditions of your Alternate Emergency Operations Center (EOC) (Communications, Energy and Water).	ALL	ALL	ALL	Your Alternate EOC is NOT Operational	Coordinate your agency's mobilization to a regional office or to another government agency that has the capacity to host its staff.

TIME	OPERATIONAL OBJECTIVES	TASK	ESF	AGENCY PRIMARY	AGENCY SUPPORT	LIMITING	CONTINGENCY
+4H	ICS/EOC Operational Structure	Activation of the State EOC	5	PREMB	N/A	State EOC can't operate.	Activate the PR Convention Center (CCPR) if it is in condition. If the CCPR could NOT operate, activate a EOC in the San Juan PREMB Zone.
+4H	Damage Assessment	Check the status of EOC radio, telephone, Internet communications.	ALL	ALL	ALL	The communications have collapsed	Activate data and voice satellite systems.
+4H	Damage Assessment	Inspect power generation systems to ensure there are no fuel spills.	ALL	ALL	ALL	N/A	N/A
+4H	OPS structure ICS/EOC	Identify staff for the first Operational period in the EOC	ALL	ALL	ALL	Most staff have abandoned facilities to look for family members.	Establish the Operations and Logistics sections as a priority
+4H	Operational response	Perform radio tests from the EOC or a radio base.	ALL	ALL	ALL	There's no communication over base radio.	Use portable radios or mobile radios installed in vehicles.

TIME	OPERATIONAL OBJECTIVES	TASK	ESF	AGENCY PRIMARY	AGENCY SUPPORT	LIMITING	CONTINGENCY
+4H	Activation of Resources	If an employee wants to leave, take the employee's information and establish an alternate form of communication in case the cellular service is unavailable.	ALL	ALL	ALL	There's no cellular communication with the employee.	Set a time and place for the employee to report and auto-activate within 24 or 48 hours depending on the aftermath of the earthquake.
+4H	Activation of Resources	Identify resources (food, vehicles, heavy equipment, etc.) that were not affected by the earthquake to help the process of rescue and stabilization of the incident.	ALL	ALL	ALL	N/A	N/A
+4H	Operational response	Facilitate access to facilities. Remove vehicles or objects that obstruct the entry and exit of the facilities of emergency units.	ALL	ALL	ALL	No heavy tools or equipment.	Team up. Use a large vehicle Ex: SUV, to pull or push other vehicles that obstruct the road.
+4H	Personnel security	Assess the scene and determine the personal protective equipment required to continue operations	ALL	ALL	ALL	N/A	N/A
+4H	OPS structure	Designate ICS positions and set response priorities starting with Save Lives and Incident Stabilization.	ALL	ALL	ALL	Most of the staff left the facilities as they went to look for relatives.	The person with the most knowledge and experience in emergency management, regardless of their official position at the agency, will take control of the scene and will be the <i>Incident Commander</i> .

TIME	OPERATIONAL OBJECTIVES	TASK	ESF	AGENCY PRIMARY	AGENCY SUPPORT	LIMITING	CONTINGENCY
+4H	Structure Operational	Total Activation of the Primary or Alternate EOC.	ALL	ALL	ALL	The EOC cannot operate and there is no way to get to the established alternate EOC.	Identify a safe area that has not been affected by the earthquake to establish a focal point for response. E.g;; can be a vehicle with capacity of many people, a tent or an open area.
+4H	Operational response	Search and Rescue on the scene continues	ALL 5, 9	OMME	PREMB Cert VOLUN	N/A	N/A
+ 4H	Hazardous Materials Operations (HAZMAT)	Respond to hazardous materials (HAZMAT) or CBRN incidents. Identify crises, consequences and decontamination management	10	PREMB DRN HM	NCBPR Fall NTSP PRNG Cst CERFP USCG DRNA BEOC Chemical Sector	Difficulty in access routes	Identify alternate routes

TIME	OPERATIONAL OBJECTIVES	TASK	ESF	AGENCY PRIMARY	AGENCY SUPPORT	LIMITING	CONTINGENCY
+ 4H	Hazardous Materials Operations (HAZMAT)	Provide medical assistance to responders during high-risk operations in Hazardous Materials incidents	8	EMS	PRDOH	Personnel are needed to provide the necessary medical assistance	Coordinate assistance from private companies, the State Medical Emergency Bureau and voluntary groups
+4H	Operational response	Check EOC's computers and communications services. Verify if you have Internet. Verify CAD and WebEOC.	ALL	ALL	NET	The computer system is not working	Request emergency Information Technology (IT) services
+4H	Medical Surge and Mass Casualties	Establish communication with hospitals to ascertain their condition, structural conditions, security conditions, Operational conditions, bed capacity and emergency room capacity.	8	PRDOH	BEOC Going NDMS PREMB	The hospital cannot operate due to serious structural damage, fires or utilities (Electricity, Water, Communications, Oxygen).	Consider a partial or total evacuation from the hospital. Establish temporary facilities outside the hospital using "Shelters" or Tents. Consider infection with COVID-19. Responders should use PPE and positive cases should stay away from the general population.
+4H	Communications	Activate authorized Amateur Radio communicators to transmit preliminary damage assessments and situational awareness reports	5	PREMB	Municipalities FCC	They can't communicate with Amateur Radios	Try alternative methods of communication such as satellite phones. Send staff from PREMB areas to search for Amateur Radios

TIME	OPERATIONAL OBJECTIVES	TASK	ESF	AGENCY PRIMARY	AGENCY SUPPORT	LIMITING	CONTINGENCY
+4H	Government Services	Conduct a damage assessment on government facilities	ALL	ALL	ALL	N/A	N/A
+4H	Damage Assessment	Perform a damage assessment on PRASA, EEA and DRNA dams	3	PREMB	PREPA PRASA DRNA	N/A	N/A
+4H	Damage Assessment	Request a damage assessment on hospitals, hospices, care centers, 330 medical centers and dialysis centers	5	PRDOH	PREMB OMME	N/A	N/A
+4H	FireFighting	Coordinate the availability of water to extinguish fires	4	NCBPR	PRASA PREMB 9-1-1	No water available	Coordinate with nearby OMME and PRASA for assistance with tanker trucks.
+4H	Risk Communication	Register cases in the "Computer+Aided Dispatch"(CAD)	2, 5	OMME	PREMB	N/A	N/A
+8H	Personnel Safety	Evaluate every 4 hours the working conditions in facilities. Start with the <i>Employee Wellness Check</i> process. Establish communication with employees who are in the facilities.	ALL	ALL	ALL	N/A	N/A

TIME	OPERATIONAL OBJECTIVES	TASK	ESF	AGENCY PRIMARY	AGENCY SUPPORT	LIMITING	CONTINGENCY
+8H	Damage Assessment	Perform a preliminary damage assessment of the building to determine the consequences of the earthquake. Take into consideration: Utilities, Communications, Accesses and Structure.	ALL	ALL	ALL	N/A	N/A
+8H	Resource Activation	Check the operation of EOC computers and communications services	ALL	ALL	PREMB NET	The Computer System doesn't work	Request emergency Information Technology (IT) services
+8H	Resource Activation Damage Assessment	Establish communication with PREMB to indicate damage and capacity situation	ALL	ALL	ALL	No traditional media available	Use satellite phones. Activate Radio Amateurs
+8H	Operational structure	Meeting or Communication between the Governor of PR and the Executive Committee to establish objectives and status report	5	Governor's Office DSP PREMB		One or more of these committee members was a victim at the event or communication cannot be filed.	The order of succession and chain of command is complied with. Depending on the information available, new viable Operational strategies will be identified

TIME	OPERATIONAL OBJECTIVES	TASK	ESF	AGENCY PRIMARY	AGENCY SUPPORT	LIMITING	CONTINGENCY
+8H	Public Information and Data Sharing	Make Risk Communications to the public	5, 15, 18	Governor's Office DSP	PREMB	Not all media systems are up and running	Use the media in the air to send clear messages and eliminate rumors.
+8H	Public Information and Data Sharing	Municipalities conduct preliminary damage assessment to PREMB Zone	5	OMME	PREMB	No conventional communication systems	Use the 100 Watt Radios for communication and the OMME satellite system. Activate Radio Amateurs
+8H	Operational structure	Designate a State Coordinating Officer (SCO, GAR)	5	Governor's Office	DSP	The Governor is out of PR or was the victim of the earthquake.	The Secretary of State designates the liaison. In the case of no Secretary of State, the Secretary of Justice appoints the SCO.
+8H	Operational response	Search and Rescue work continues around the scenes	5, 9	PREMB	DSP	N/A	N/A
+8H	Resource Activation	Activation of the PR National Guard (PRNG) through an Executive Order	5, 16, 18	SCO Governor's Office	PREMB PRNG	Collapse in Communications	Preset autoactivation when a catastrophic event occurs.

TIME	OPERATIONAL OBJECTIVES	TASK	ESF	AGENCY PRIMARY	AGENCY SUPPORT	LIMITING	CONTINGENCY
+8H	Hazardous Materials Operations (HAZMAT)	Exposure, risk assessment and control of identified threats in industries with high quantities of Hazardous Materials	10	DRN HM	PREMB EPA DRNA	N/A	N/A
+8H	Energy	Perform a damage assessment to PR's electrical system	12	PREPA	PREMB BEOC Energy Sector	PREPA helicopters are not working	Contact helicopter companies
+8H	Damage Assessment	Perform a damage assessment to PR ports and Piers	1	PRPA	USCG USACE Municipalities BEOC	Communication s Issues	Use alternative media such as portable radios
+8H	Damage Assessment	Conduct a damage assessment to PR airports	1	PRPA	BEOC	Communication s Issues	Use alternative media such as portable radios
+8H	Routes and Accesses	Report roadblocks and conditions and bridge collapse.	1, 3	DTOP	ACT Municipalities Contractors NPPR PRNG PREMB	N/A	N/A
+8H	Medical evacuations (Terrestrial and Air)	Identify hospitals with structural damage	7, 8, 17	PRDOH	PREMB BEOC Health Sector	Hospitals report structural damage and electrical failures	Contact FMS

TIME	OPERATIONAL OBJECTIVES	TASK	ESF	AGENCY PRIMARY	AGENCY SUPPORT	LIMITING	CONTINGENCY
+12H	Operational structure	Situation meeting between PREMB's Branch of Operations and PREMB Zone Directors to learn about the situation and damage to the area and the management and logistics of resources	5, 16	PREMB NPPR	PRANG	State EOC remoteness or impassable roads	Attempt communications via cell phone or interoperable radios
+12H	Operational response	Prepare Air Operations for damage assessment and conduct reconnaissance flights to assess the status of the earthquake consequences.	5	PREMB	All PREMB Zones	N/A	N/A
+12H	Resource Activation	Identify and activate resources for handling Type 1 and 2 Incidents as typified in the Resource Typing of municipalities.	5	PREMB	Municipalities	N/A	N/A
+12H	Resource Activation	Activate Radio Amateurs (RA) Communications resources	2, 5, 19	PREMB	Municipalities Ra (Radio Amateurs)	They don't know where to operate or to coordinate with.	Instruct Amateur Radios to report to their nearest Emergency Management Office.
+12H	Operational response	Using public media to ask Radio Amateurs (RA) to support the communications work of municipalities and agencies	2, 5	PREMB	Ra	N/A	N/A

TIME	OPERATIONAL OBJECTIVES	TASK	ESF	AGENCY PRIMARY	AGENCY SUPPORT	LIMITING	CONTINGENCY
+12H	Operational response	Search and Rescue work continues in communities near each incident	5.9	OMME,	PRNG PREMB	N/A	N/A
+12H	TRIAGE AND Medical Surge	Coordinate with the Medical Emergency Bureau and private ambulance companies to make transfers of patients, by land and air, from hospital to hospital.	8	PRDOH	EMSPR PREMB FEMA HHS BEOC BEOC Hospital sub sector	There is no availability of ALS ambulances. There is little capacity to receive patients in hospitals	Assign BLS ambulances to keep clinical staff in hospitals. Coordinate with FEMA and PRNG the availability of your medical units (ships and land). Take into account safety measures with patients positive for COVID-19.
+12H	Search and Rescue (SAR)	Distribution of specialized equipment and vehicles for search and rescue	9	PREMB	FEMA / ESF #9 Federal Primary Agencies and Support Agencies DRNA PR POLICE NCBPR NPPR OMME Volunteers PRNG	There are no vehicles or enough equipment	Request for personnel and equipment from municipalities, SAR teams, activate EMACs, IMAT, volunteer groups, police, firefighters, etc.

TIME	OPERATIONAL OBJECTIVES	TASK	ESF	AGENCY PRIMARY	AGENCY SUPPORT	LIMITING	CONTINGENCY
+12H	Public Safety	Provide security to open camps, shelters, gas stations, ice factories, cell towers, and Critical Infrastructures, as defined by DHS.	13	NPPR	PRNG DHPR DRNA SECURITY DSP DOJ DHS Pm	Not enough police officers are available	Distribute all state and municipal police assets. If necessary, staff from private companies will be hired.
+12H	Incident Action Plans	Advance payment to PAN beneficiaries	5	DFPR	PREMB	Collapse in the Communications system to carry out transfers of funds and transactions in shops	Distribute "vouchers" of purchase that are accepted by merchants
+12H	Vector Feeding and Control	Promote in the public the protocol of boiling water before drinking it, this includes water that does not come from PRASA	8	PRDOH	DAPR PREMB	There are no Communications available to bring the message to the masses	The PRDOH will send staff to visit and guide on boiling water before drinking it in communities where outbreaks have been reported because of the lack of drinking water

TIME	OPERATIONAL OBJECTIVES	TASK	ESF	AGENCY PRIMARY	AGENCY SUPPORT	LIMITING	CONTINGENCY
+12H	Military Support	Contact USNORTHCOM J36 / Coordinate DSC options / Request JEC (J36 Staff Increase)	5.16	SCO PRNG	USNORTHCO M J36 / NGB	Distance and arrival time from the United States	
+12H	Air Mission Management	Prepare the Air Operations Branch	5	PREMB OPS	PR/PRNG/ESF police #9 Federal Primary Agencies and Support Agencies	Location / Facilities	
+12H	EOC/ICS	Request Incident Management Teams Type 1 and 2 – Activate the Operational period of Control "Operational Span of Control"	5, 7	PREMB	FEMA DOD PRNG	Extended arrival period and FOC	Activation of Emergency Management Assistance Compact (EMAC) agreements
+12H	EOC/ICS	Check the operation of EOC computers and communications services	ALL	ALL	NET Comm	The Computer System doesn't work	Request emergency Information Technology (IT) services

TIME	OPERATIONAL OBJECTIVES	TASK	ESF	AGENCY PRIMARY	AGENCY SUPPORT	LIMITING	CONTINGENCY
+12H	Logistics	Temporarily suspend the collection of taxes at the port to allow container owners to pick up the commodities and merchandise they have at the port to release the volume of containers, make chassis available to emergency commodities that would arrive after the emergency as disaster relief. Container's owners will have up to 30 days to pay their taxes to the PR Treasury Department (DHPR). This will expedite the port operation and will reestablish the supply chain immediately.	5	DHPR Governor's Office	PREMB	N/A	N/A
+12H	Supply Chain	Request status on inventory availability and safety and requests for blood, tissue and blood products	8	PRDOH	PREMB HHS FEMA American Red Cross	N/A	N/A

TIME	OPERATIONAL OBJECTIVES	TASK	ESF	AGENCY PRIMARY	AGENCY SUPPORT	LIMITING	CONTINGENCY
+24H	Operational structure	Activate the Command-and-Control structure of the EOC. <i>Consider Dual Status Command</i>	ALL	PREMB	PRNG	Lack of staff	Activate the Planning, Logistics, and Operations sections of the EOC. Fill positions with Interagency Coordinators, non-governmental and PREMB staff.
+24H	Public Information and <i>Data Sharing</i>	Assess the status of technology platforms for information collection and exchange (WebEOC) and CAD	5	PREMB	DSP OMME	Collapse of the Internet System	Using satellite data
+24H	Operational structure	Establish communication with Federal Emergency Support Functions (ESFs)	5	PREMB	ALL	The Communication s system is unavailable or collapsed	Prepare pre-agreed forms for resource requisition.
+24H	Resource Activation	Contact USNORTHCOM J36 / Coordinate DSC options / Request JEC (J36 Staff Increase)	5, 16	SCO PRNG	USNORTHCO M J36 / NGB	Distance and arrival time from the United States	N/A

TIME	OPERATIONAL OBJECTIVES	TASK	ESF	AGENCY PRIMARY	AGENCY SUPPORT	LIMITING	CONTINGENCY
+24H	Operational response	Conduct preliminary assessment of critical roads and bridges. Open roads to Fuel Racks	1, 5	DTOP Municipalities	BEOC	Not enough engineers	Make public call to people retired or knowledge in structural engineering to support municipalities in the assessment of roads and bridges.
+24H	Resource Activation	Contact USNORTHCOM J36 / Coordinate DSC options / Request JEC (J36 Staff Increase)	5, 16	SCO PRNG	USNORTHCO M J36 / NGB	Distance and arrival time from the United States	N/A
+24H	Operational response	Conduct preliminary assessment of critical roads and bridges	1, 5	DTOP Municipalities	BEOC	Not enough engineers	Make public call to people retired or knowledge in structural engineering to support municipalities in the assessment of roads and bridges.
+24H	Resource Activation	Activate <i>Emergency Management Assistance Compacts (EMACS)</i> established with U.S. states.	5, 7	PREMB	FEMA SCO OGP	N/A	N/A

TIME	OPERATIONAL OBJECTIVES	TASK	ESF	AGENCY PRIMARY	AGENCY SUPPORT	LIMITING	CONTINGENCY
+24H	Resource Activation	Identify the available resources and resources needed to respond to the emergency available in PR and order them through GSA.	5.7	GSA	PREMB	No Communication to Make Emergency Purchase Requests	Activate contracts and agreements with the private company.
+24H	Search and Rescue Operations	Activation of PR NETC FOC. FOC resources. Response after event / Action plan completed and communicated to all SAR and PRUSAR responders	9	PREMB FEMA	PRNG / ESF #9 Federal Primary Agencies and Support Agencies	N/A	N/A
+24H	Operational structure	Dual Status Command (DSC) Full Operational Capability (FOC)	16	PRNG DOD	NC/J36 JEC	N/A	N/A
+24H	Operational response	Set curfew for the general population. Essential Emergency Personnel (EEP) are exempt.	13, 18	Governor's Office	DSP	The general population will be on the streets hampering work and congesting traffic routes	Set a 24 hrs. curfew if necessary, to allow first responders and emergency units carry out their duties

TIME	OPERATIONAL OBJECTIVES	TASK	ESF	AGENCY PRIMARY	AGENCY SUPPORT	LIMITING	CONTINGENCY
+24H	Providing Staff Safety	Implement credential protocols	5, 13	PREMB NPPR	PRNG DHPR DRNA Security DSP DOJ DHS Pm BEOC	A credential protocol is not established	Establish criteria using the EOC Web resource list
+24H	Providing Staff Safety	Coordinate the vaccination of responders	8	PRDOH	PREMB HHS	There is not enough inventory in PR or they were destroyed at the event	Establish communication with the CDOC to request the submission of additional vaccines. Take into account safety measures with patients positive for COVID-19.
+24H	Search and Rescue Operations	Review and share the Communications Interoperability Plan	2, 9	ALL	PREMB NETC	N/A	N/A
+24H	Operational response	Inspect the island's piers. Check their status and if they are functional and can receive cargo (San Juan, Ceiba, Ponce, Mayaguez)	5,3,7	PRPA	USCG	The Port Authority has not been able to carry out an initial injury assessment	Seek support from the Coast Guard (USCG) to evaluate ports to identify their workability and capacity by ship type and capacity

TIME	OPERATIONAL OBJECTIVES	TASK	ESF	AGENCY PRIMARY	AGENCY SUPPORT	LIMITING	CONTINGENCY
+24H	Logistics	Confirm existing MOU's with Community Hubs request the required inventory lists, based on hub composition. Salvation Army, VOAD, Red Cross	5	PREMB	FEMA Community Hubs	N/A	N/A
+24H	Resource Activation	Establish communication with the main suppliers of the Single Register of Bidders to establish alternative methods of communication	5.7	PREMB, GSA DHPR	FEMA	N/A	N/A
+24H	Sort resources and private sector activation through the BEOC	Ask BEOC for a list of private companies that have the ability to supply fuel, food, water and medicines to be contracted by the state or FEMA.	5, 17	GSA DHPR Gar OGP PREMB DOJ	BEOC	An updated supplier list is not available	Summon local suppliers through the media they are working on.
+24H	Hazardous Materials Operations (HAZMAT)	Assess the risks to potential leakage of hazardous materials that may have occurred during the event in pharmaceuticals and chemical plants	10	DRN HM 22nd CST	BEOC Chemical Sector	Lack of trained personnel for this type of situation	Establishing continuing education training on hazardous materials

TIME	OPERATIONAL OBJECTIVES	TASK	ESF	AGENCY PRIMARY	AGENCY SUPPORT	LIMITING	CONTINGENCY
+24	Search and Rescue (SAR)	Coordination of all search and rescue missions with air and sea units across areas and municipalities	9.4, 16 per cent	PREMB	FEMA / ESF #9 Federal Primary Agencies and DRNA Support Agencies PR POLICE NCBPR NPPR OMME Volunteers PRNG	Large numbers of SAR resources are not familiar with the area. Complicated access areas. Lack of communication services.	Type 1 and 2IMT request for incident handling within an isolated and specified area. Use drones with cameras to perform search and rescue tasks. Coordinate with the police and PRNG the use of air resources. Activate Amateur Radio.
+24H	Communications	Coordinate with telecommunication companies (AT&T, Claro, Open Sprint, T-Mobile, etc.) activate their repair equipment	5	NET	PREMB PREPA DTOP Municipalities BEOC Communication Sector	N/A	N/A

TIME	OPERATIONAL OBJECTIVES	TASK	ESF	AGENCY PRIMARY	AGENCY SUPPORT	LIMITING	CONTINGENCY
+24H	Routes and Accesses	Assign state and private working groups to open accesses on the roads and achieve fuel distribution	3	DTOP	ACT Municipalities NPPR PRNG PREMB BEOC Fuel Sector	No equipment available in municipalities or DTOP	Activate contracts with private companies
+24H	Vector Feeding and Control	Monitoring of natural resources and products from agriculture of potential pollution	8	PRDOH	Agriculture BEOC Agriculture Sector	N/A	N/A
+24H	Public Safety	Establish security on the perimeter of scenes	13	NPPR	PRNG DHPR DRNA Security DSP DOJ DHS Pm	Not enough police officers are available	Distribute all state and municipal police assets. If necessary, staff from private companies will be hired.

TIME	OPERATIONAL OBJECTIVES	TASK	ESF	AGENCY PRIMARY	AGENCY SUPPORT	LIMITING	CONTINGENCY
+24H	Public Security	Report security incidents at scenes	13	NPPR	PRNG DHPR DRNA Security DSP DOJ DHS Pm	Not enough police officers are available	Distribute all state and municipal police assets. If necessary, staff from private companies will be hired.
+24H	Responder Safety	Assess equipment needs, safety measures and procedures for response personnel	ALL	ALL	Osha PROSHA Dept. of Labor	Lack of equipment	Submit "RF+113"
+24H	Responder Safety	Evaluation of missions to ensure the health and safety of Operational teams through the use of the ICS 215a + "Incident Action Plan Safety Assessment" form.	8	PRDOH	PROSHA Osha	Communication about the status of field operations does not flow	Use of universal safety precautions and wound prevention.

TIME	OPERATIONAL OBJECTIVES	TASK	ESF	AGENCY PRIMARY	AGENCY SUPPORT	LIMITING	CONTINGENCY
+24H	Medical evacuations (Terrestrial and Air)	Identify the areas available for helicopter landing	8, 9	PRDOH	PREMB AEROMED BEOC Health Sector	No areas available for helipad	Coordinate with municipalities the identification of a place for helipad + ESF 9 Air Ops
+24H	Medical evacuations (Terrestrial and Air)	Assess compliance with patient air transfer requirements	8, 9	PRDOH	PRDOH EMSPR Going NDMS FEMA	Patient(s) does not qualify for transfer	Use of conventional systems that are available. Activate NDMS and ESF 9 Air Ops.
+24H	Special Population	Provide support to municipalities in special population evacuation operations.	5, 9, 16, 17	OMME	PREMB DVPR PRDOH DFPR PRNGBEOC	Municipalities have limited transport capacity	Activate public transport agreements such as school buses, bus operators, tourist transport, public transport, vans or taxi services.
+24H	EOC/ICS	Situation meeting between PREMB's Branch of Operations and PREMB Zone Directors to learn about the situation and area damage and resource management and logistics	5	PREMB	All PREMB Zones	State EOC remoteness or impassable roads	Attempt communications via cell phone or interoperable radios

TIME	OPERATIONAL OBJECTIVES	TASK	ESF	AGENCY PRIMARY	AGENCY SUPPORT	LIMITING	CONTINGENCY
+24H	Incident Action Plans	Create an Incident Action Plan (IAP) for the first Operational periods	5	ALL	ALL	Lack of Internet	Keep paper formats printed and available
+24H	Medical evacuations (Terrestrial and Air)	Evaluation of patients who may require evacuation from the islands of Vieques and Culebra.	8	PRDOH	PREMB FEMA Atm PRPA HHS	Vieques and Culebra ferries are not working	Contact private ambulance services (E.g., Aeromed) or airline (E.g., Vieques Air Link)
+24H	Risk Communication	Carry out risk communications and Rumor Control	5, 15	Governor's Office PREMB	PREMB	Rumors via social media	Control of rumors through press releases and conferences with the agencies involved.
+24H	Sort resources and private sector activation through the BEOC	Check the extent of the damage to telecommunication companies and the status of activation of their emergency Operational plans.	2, 17	NET	PREMB BEOC	The Communication s System collapsed.	Ask companies for an Action Plan
+24H	EOC/ICS	Activate MOUs and the Emergency Management Assistance Compacts (EMAC) with other states	5, 7	DSP PREMB	OGP PRNG SCO	Collapse in Communication s Systems	Communicate through the satellite system

TIME	OPERATIONAL OBJECTIVES	TASK	ESF	AGENCY PRIMARY	AGENCY SUPPORT	LIMITING	CONTINGENCY
+24H	Supply Chain	Ask hospitals for their medicine and beds inventory HAVBED	8	PRDOH	PREMB FEMA	Hospitals do not report inventory	Call the drugstores directly to report inventory.
+24H	Supply Chain	Request the Department. Education the inventory of food in school kitchens and their warehouses	5.6	DEPR	PREMB	N/A	N/A
+24H	Supply Chain	Ask the Family Department for food inventory from their warehouses	6	DFPR		N/A	N/A
+24H	Critical Infrastructure	Check the operational conditions of Hospitals.	8, 17	PRDOH	BEOC Health Sector Health Services Coalitions	N/A	N/A
+24H	Critical Infrastructure	Check the conditions of the main utilities of the Critical Infrastructure of Hospitals	8, 17	PRDOH	BEOC Health Sector Health Services Coalitions	N/A	N/A
+24H	Critical Infrastructure	Critical infrastructures should notify PREMB of damages outside their premises	5	PREMB DHS+PSA	BEOC Sector Leaders	There is no response from ICs	Request support from DHS contacts, Protective Security Advisor, and the BEOC contact

TIME	OPERATIONAL OBJECTIVES	TASK	ESF	AGENCY PRIMARY	AGENCY SUPPORT	LIMITING	CONTINGENCY
+24H	Risk Communication	Distribute ICS 205a Communications Plan	5	Gob	PREMB Jic	Staff don't know how to use the ICS 205a form	Offer a Just in Time Training
+24H	Risk Communication	Enable Tactical Channels if needed	2, 5	PREMB	ALL	Tactical channels present technical problems	N/A
+24H	Damage Assessment	Conduct a preliminary damage assessment of roads and bridges affecting critical PR infrastructures and fuel distributors	3	DTOP	ACT, Municipalities and USACE	Lack of staff	Request and coordinate support from the US Corps of Engineers and municipal staff
+24H	Damage Assessment	Perform a preliminary damage assessment of basic PR utilities	3	PRASA, PREPA, NET	PREMB	Extensive damage	Providing alternative services
+24H	Damage Assessment	Perform a damage assessment on the PR's electrical infrastructure	12	PREPA	PREMB	Lack of staff, equipment and obstruction of access	Request and coordinate support from the US Corps of Engineers, DTOP, municipal staff and contractors

TIME	OPERATIONAL OBJECTIVES	TASK	ESF	AGENCY PRIMARY	AGENCY SUPPORT	LIMITING	CONTINGENCY
+24H	Responder Safety	Activate and coordinate the work of volunteer groups	5, 19	PREMB	ALL	They can't communicate with volunteers	Establish self-activations of voluntary groups: CERT and search and rescue groups to ensure continuity of response tasks
+24H	Supply Chain	Send warning of possible activation of the PRSG	5	PRSG	PRNG	N/A	N/A
+24H	Special populations	Establish phone numbers so that people with disabilities can call and indicate their information and special condition that requires assistance	5	9-1-1	PREMB PRDOH DFPR 3-1-1	N/A	N/A
+24H	Public Safety	Impose curfew from 6pm to 6am on non-emergency civilians. (Essential Emergency Personnel): Public Health, Private and Public Safety, Transportation, Communications, Food and Drug Supply Chain, Military, Emergency Coordinators, Press and Veterinarians)	ALL	NPPR	PRNG DHPR DRNA SECURITY DSP DOJ DHS Pm	Doubts arise about the term: <i>Essential Emergency Personnel</i>	Clarify to the media who are essential personnel: Public Health, Private and Public Safety, Transportation, Communications, Food and Drug Supply Chain, Military, Emergency Coordinators, Press and Veterinarians

TIME	OPERATIONAL OBJECTIVES	TASK	ESF	AGENCY PRIMARY	AGENCY SUPPORT	LIMITING	CONTINGENCY
+24H	Public Safety	Report any HAZMAT event to the public as a precaution	10	DRN HM	NPPR NCBPR	N/A	N/A
+24H	Strategic National Stockpile (SNS)	Evaluation of the state reservation for identifying a resource loss and the need to activate SNS. [SNS is activated when the state drug reserve drops by 30% and under a federal emergency statement]	8	PRDOH	CDOC ASPR PREMB FEMA RSS	Problems accounting for state reserve	Have an accurate inventory of the state reserve
+24H	Develop damage assessments by Branches	PRASA, PREPA and Natural Resources Dam Damage Assessment		PREPA PRASA DRNA		N/A	N/A
+24H	TRIAGE and Medical Surge	Coordinate with state EMSPR or private ambulance companies transfers of patients from hospital to hospital or for emergency services including air ambulance.	8	PRDOH	EMSPR PREMB FEMA NDMS Public and Private Hospitals Ambulance companies	No ALS ambulances for patient transport Limited space in private, public and health hospitals.	Assign paramedics to BLS ambulances to keep clinical staff in hospitals. Coordinate with FEMA and the National Guard the use of PRNG Hospital Ships and Portable Hospital Units.

TIME	OPERATIONAL OBJECTIVES	TASK	ESF	AGENCY PRIMARY	AGENCY SUPPORT	LIMITING	CONTINGENCY
+24H	TRIAGE and Medical Surge	Each hospital must establish an area for the evaluation of patients. Establish TRIAGE and install tents "Western Shelters" to increase their capacity.	8	PRDOH	EMSPR PREMB FEMA NDMS Public and Private Hospitals Ambulance companies	Saturated public and private ambulance services. Conditions do not allow air ambulance flight.	Take into account the safety and management measures of patients positive to COVID-19.
+24H	Transportation	Coordinate evacuee relocation process with family members	6	DVPR	Municipalities AMA/DOT EMSPR PREMB	The evacuee has no transport available	Municipality or DFPR coordinates transportation
+24H	Volunteer Management	Inform the public the telephone numbers of the American Red Cross, Salvation Army and other NGO's to receive assistance	5	PREMB DFPR NPPR	Red Cross OVAD Chaplains Salvation Army	N/A	N/A

TIME	OPERATIONAL OBJECTIVES	TASK	ESF	AGENCY PRIMARY	AGENCY SUPPORT	LIMITING	CONTINGENCY
+24H	Special populations	Prioritize infants, pregnant women, dialysis patients, elderly, persons with physical disabilities and special populations. Provide direct assistance to these special populations with specialists.	8	PRDOH	DFPR DVPR DEPR	Patients have no means of transportation to get their services	Coordinate with alternative means of transport in order to reach your medical services
+24H	Special populations	Assess impact or consequences of victims identified as special populations	8	PRDOH DFPR		N/A	N/A
+24 H	Strategic National Stockpile (SNS)	Following an Emergency Declaration in Public Health and Federal Health <i>and Human Services (HHS)</i> activation. HHS personnel are usually activated in coordination with PRDOH 48-72 hours before an earthquake arrives. These staff are monitoring situations happening in Puerto Rico and the Virgin Islands	8	PRDOH	NPPR HHS Pm	SNS does not have the medicines and supplements needed	Order these drugs and/or pharmaceutical supplements according to their production

TIME	OPERATIONAL OBJECTIVES	TASK	ESF	AGENCY PRIMARY	AGENCY SUPPORT	LIMITING	CONTINGENCY
+24 H	Strategic National Stockpile (SNS)	If you identify that your drug supply in Puerto Rico has dropped by 30%, you can activate your drug distribution plan through <i>PR's Receive Stage and Store (RSS)</i> .	8	PRDOH	NPPR HHS PM's	Knowledge of the drug distribution plan is not known to all PREMB responders	Disseminate the SNS plan among the responders of the different agencies.
+24H	Evacuations from Private and Public Hospitals	Ask hospitals to meet and do a Hazard Vulnerability Assessment (HVA) assessment to determine their immediate resource needs. This is being done by coalition before the emergency. A good alternative would be to conduct a "rapid damage assessment" in which structural and functional problems of the institution are identified	13	EMSPR	PRDOH Hospital coalitions	Difficulty getting the information	
+24H	Fatality Management	Activate protocols in the NCFPR on mass fatality management as a preventive measure.	13	NCFPR	PRDOH PREMB DMORT	Protocol is not developed	Develop the protocol
+24H	Maps	Locate employees who have not reported to work. Use the coordinates of your residences and send staff to check the status of your employees	ALL	ALL		N/A	N/A

TIME	OPERATIONAL OBJECTIVES	TASK	ESF	AGENCY PRIMARY	AGENCY SUPPORT	LIMITING	CONTINGENCY
+24H	Maritime and air cargo transport	As soon as the USCG authorizes, maintain constant operations 24 hours a day to mobilize cargo off the piers and facilitate the entry of essential products cargo	5	PREMB	Shipowners PREMB FEMA Transport Carriers BEOC AIPR	You can't work 24 hours	Work shifts are set up to allow truckers to flow expeditiously
+24H	Maritime and air cargo transport	Activate Truckers Associations and Unions	5	PREMB	Shipowners PREMB FEMA BEOC AIPR	N/A	N/A
+24H	Contracts and Agreements	Activation of GSA contracts or any other agency and/or collaborative agreements based on the damage reports	7	GSA	OGP DHPR Gar Private company	N/A	N/A

TIME	OPERATIONAL OBJECTIVES	TASK	ESF	AGENCY PRIMARY	AGENCY SUPPORT	LIMITING	CONTINGENCY
+24H	Search and Rescue Operations	Air Branch FOC. Establish Complete Air Operations Plan.	1, 5, 9	PREMB /	PRANG / FEMA / NPPR / DOD FAA	N/A	N/A
+24 H	Energy	Establish priorities for the restoration of electricity services, starting with "Centro Medico" ASEM, Public or Private Primary Hospitals, Airport, Port Area, Food Distribution Centers, Water Purification and Bottling Plants, Fuel Distribution Centers, Communications Centers, Hotels, Supermarkets, Pharmaceuticals, Shops and Residences	12	PREPA	Governor Office PREMB	N/A	N/A
+24H	Public Works	Coordinate road and highway cleaning to allow vehicle flow.	3	DTOP	PREMB NPPR	No resources	Mobilizing Private contractors to establish brigades
+36H	Operational structure	Validation of credentials for emergency personnel and EOC members	5	PREMB	DSP	N/A	N/A
+36H	Hazardous Materials Operations (HAZMAT)	Identify the locations that were affected by fuel spills. Coordinate the response and prevention of damage to the environment and the population	10	DRN HM, EPA	PREMB	Lack of specialized staff	Activate pre-agreements with private companies working with hazardous materials

TIME	OPERATIONAL OBJECTIVES	TASK	ESF	AGENCY PRIMARY	AGENCY SUPPORT	LIMITING	CONTINGENCY
+36 H	Transfer of pediatric and dialysis patients	Coordination between pediatric hospitals, dialysis centers and hospitals to transport patients to the US Mainland to receive critical treatment if necessary	8	PRDOH FEMA	PREMB EMSPR	Air transport of these patients	Collaborative agreements must be established with airlines
+36H	Search and Rescue (SAR)	Continuously monitor, identify and request the resources that are necessary to complete the search and rescue missions.	9	PREMB	FEMA / ESF #9 Federal Primary Agencies and Support Agencies DRNA PR POLICE NCBPR NPPR OMME Voluntary Groups PRNG	Lack of search and rescue personnel and equipment	Request specialized staff from: PREMB (PRUSAR), NCBPR (USE TEAM & Special Ops), PRNG (CERFP), DOD (Army reserve USAR Team), FEMA (US&R TF), EMAC, Cert and NGOS

TIME	OPERATIONAL OBJECTIVES	TASK	ESF	AGENCY PRIMARY	AGENCY SUPPORT	LIMITING	CONTINGENCY
+36H	K+9 Search and Rescue Operations	Coordinate search and rescue activities with rescue dogs	9	PREMB	FEMA ESF 9, 11 Dept of Ag (PR) Voluntary Groups Veterinary BEOC Health Sector	There are few search and rescue dogs in PR	Use the dogs available in PR for the most critical missions while coordinating the arrival of additional dogs. Coordinate a schedule with the PR College of Veterinarians to provide medical assistance for these dogs if necessary.
+36H	Fatality Management	Ask all hospitals for the number of people who have died in the institution	8	PRDOH NCFPR	PRDOH DMORT Hospitals BEOC Health BEOC Hospitals SubSector	No communication available	Assign PREMB Zones "runners". Visit in addition to the municipal funeral homes that are operating
+36H	Fatality Management	Ask the Forensic Sciences Bureau for the number of corpses received at the institution	8	PRDOH	DMORT NCFPR	No communication available	Assign PREMB Zones "runners" to collect information.
+36H	Transportation	Implement an alternate route plan for mass transportation (AMA) and urban train energization	3	DTOP	Ati	N/A	N/A

TIME	OPERATIONAL OBJECTIVES	TASK	ESF	AGENCY PRIMARY	AGENCY SUPPORT	LIMITING	CONTINGENCY
+36H	General Population	Establish procedures for distributing water systems for evacuee hygiene in camps. Bathrooms, portable showers or hose systems with drinking water.	5, 16	PREMB	PRNG	N/A	N/A
+36H	Situation Status	Collect status reports to develop IAP.	5	PREMB	FEMA PRNG	The exchange of information is impossible due to the collapse of communications	Use of alternate communications and conduct aerial assessments to assess situational status
+36	Public Safety	Patrol coordination	13	NPPR	PRNG DHPR DRNA SECURITY DSP DOJ DHS Pm	Not enough police officers are available	Distribute all state and municipal police assets. If necessary, staff from private companies will be hired.

TIME	OPERATIONAL OBJECTIVES	TASK	ESF	AGENCY PRIMARY	AGENCY SUPPORT	LIMITING	CONTINGENCY
+36H	Transferring dialysis and pediatric patients	Follow up with U.S. dialysis centers and pediatric hospitals so they can continue their treatments in the states. Reevaluate each patient before is sent to another jurisdiction. Notify their family members. Establish a Patients Tracking System.	8, 9, 16, 17	PRDOH	PREMB EMSPR NPPR BEOC Health Sector	Patient transport	Establish collaboration agreements for patient transport.
+36H	Special Population	Establish contact numbers where special populations can call for support	5, 6, 8, 17	9-1-1	PREMB PRDOH DFPR 3-1-1 BEOC	N/A	N/A
+36H	Incident Action Plans	Review the basic Operational plans of agencies.	ALL	ALL	ALL	Lack of knowledge of how to develop an IAP	PREMB staff, previously identified, offers Just in Time training
+36H	EOC/ICS	Activating the private sector through BEOC	5, 16	PREMB BEOC	Gar DACO	There is no communication with the BEOC representative	Self-activation, previously established

TIME	OPERATIONAL OBJECTIVES	TASK	ESF	AGENCY PRIMARY	AGENCY SUPPORT	LIMITING	CONTINGENCY
+36H	General Population	Provide a list of available shelters to 9-1-1 and 3-1-1 phone services so they can provide information to people	5, 6	PREMB	9-1-1 3-1-1 DVPR	The list of shelters is out dated	Request inventory of shelters from PREMB Zones
+36h	General Population	Inventory of available equipment to enable "Camps" open shelters (Tents, cots, Awnings, Western Shelters)	6	DVPR DEPR	PREMB	Inventory is not available as the warehouse where they were located collapsed	Making emergency purchases
+36H	Sort resources and private sector activation through the BEOC	Ask BEOC for a list of private companies that have the ability to supply fuel, food, water and medicines to be contracted by the state or FEMA.	5, 17	GSA DHPR Gar OGP PREMB DOJ	BEOC	An updated supplier list is not available	Summon local suppliers through the media who are working or designate a "runner" to visit major suppliers.
+36H	Coordination of Search and Rescue Missions	Facilitate key areas of SMC coordination – Develop Special Instructions (SPINS)	9	PREMB ESF #9	PRNG / ESF #9 Federal Primary Agencies and Support Agencies	N/A	N/A

TIME	OPERATIONAL OBJECTIVES	TASK	ESF	AGENCY PRIMARY	AGENCY SUPPORT	LIMITING	CONTINGENCY
+36H	Logistics	Conduct a preliminary assessment of damage to all the piers of the island are functional and can receive cargo (Ceiba, Ponce, Mayaguez among others)	5,3,7	PRPA	USCG	The Port Authority has not been able to carry out an initial injury assessment	Seek support from the Coast Guard (USCG) to evaluate ports to identify their workability and capacity by ship type and capacity
+36H	Logistics	Conduct a preliminary damage assessment and inventory of PREMB warehouses (Ponce and Guaynabo) that are managed by Volunteer Groups	5	PREMB	FEMA	N/A	N/A
+36H	Supply Chain	Conduct a preliminary damage assessment and inventory state and federal warehouses. Ask FEMA for the necessary supplies	5	PREMB GSA	DFPR DEPR FEMA	N/A	N/A
+36H	Risk Communication	Notification to amateur radios to communicate with the state and present their Communications plan	2, 5	PREMB	FCC JTTC	Radio Amateurs are not confirming	Contact radio Amateurs through PREMB Zones and Associations
+36H	Threat Assessment	Coordinate and establish CAMPS pet shelter areas	5, 6, 11	PREMB DVPR	All MME DFPR DEPR DVPR	Disinformation via social media	Keeping official reports constantly in all media

TIME	OPERATIONAL OBJECTIVES	TASK	ESF	AGENCY PRIMARY	AGENCY SUPPORT	LIMITING	CONTINGENCY
+36H	Food and Water Safety + Vector Control	Coordinate water distribution in communities that have been isolated after the event, hospitals, camp, dialysis centers and care centers.	5	PRASA	OMME PREMB PRDOH DAPR DRNA	N/A	N/A
+36H	Special populations	Categorization monitoring to establish the profile by population type.	8	PRDOH	Housing Family	N/A	N/A
+36H	Safety of Responders and Coordinators	Ensuring the availability and use of personal protective equipment during responder operations	ALL	ALL	Osha PROSHA Department of Labor	There is no personal protective equipment in the agency	Place emergency purchase orders
+36H	Safety of Responders and Coordinators	Make sure you have all the necessary personal protective equipment depending on the environmental emergency that arises	10	DRN HM	NPPR NCBPR PREMB	There is no personal protective equipment in the agency	Place emergency purchase orders
+36H	Special populations	Categorization monitoring to establish the profile by population type.	8	PRDOH	Housing Family	N/A	N/A

TIME	OPERATIONAL OBJECTIVES	TASK	ESF	AGENCY PRIMARY	AGENCY SUPPORT	LIMITING	CONTINGENCY
+36H	Safety of Responders and Coordinators	Ensuring the availability and use of personal protective equipment during responder operations	ALL	ALL	Osha PROSHA Department of Labor	There is no personal protective equipment in the agency	Place emergency purchase orders
+36H	Safety of Responders and Coordinators	Make sure you have all the necessary personal protective equipment depending on the environmental emergency that arises	10	DRN HM	NPPR NCBPR PREMB	There is no personal protective equipment in the agency	Place emergency purchase orders
+36H	Supply Chain	Request an inventory of available blood and blood products resources.	8	PRDOH	PREMB American Red Cross	N/A	N/A
+36H	Logistics	Ask Zones EOCs and Alternate EOC for their food, water and fuel inventory for power generators	ALL	ALL	ALL	Utilities are useless and have little inventory to survive	Coordinate with PREPA and PRASA
+36H	Logistics	Start the movement and distribution of containers from the San Juan Port. Make sure the owners' pickup their containers and return the chassis to the port for the upcoming disaster relief assistance. A 30-day proration of taxes is in effect to importers.	1, 5, 7	PREMB NTSP	PRPA DHPR	Owners don't claim their containers	Transport them to a HUB meeting point for a load relay and speed up the process.

TIME	OPERATIONAL OBJECTIVES	TASK	ESF	AGENCY PRIMARY	AGENCY SUPPORT	LIMITING	CONTINGENCY
+36H	Critical Infrastructure	Establish communication with critical infrastructures to know status and needs.	5, 7	PREMB	ALL	N/A	N/A
+36H	Damage Assessment	Conduct a damage assessment of telecommunications infrastructure	2	NET	PREMB	Obstruction in access to the towers	Coordinate the support of DTOP, municipal staff and contractors
+36H	Activating resource movement	Suppliers deliver commodities	7	PREMB, GSA and ALL	ALL	Truckers are missing to move the cargo.	Provide available NTSP trucker lists to suppliers.
+36H	Activating resource movement	Activation to mobilize essential products and open Distribution Centers or PODS	5	PREMB	PRNG	N/A	N/A
+36H	Activating resource movement	Activation of AMA DOT drivers for possible evacuee mobilization	1	AMA/DOT	DTOP	Drivers don't arrive or don't respond	Use school or municipal transport
+36H	Government Services	Start emergency communications processes to know the status of each agency's employees and their needs after the event	ALL	ALL	ALL	N/A	N/A

TIME	OPERATIONAL OBJECTIVES	TASK	ESF	AGENCY PRIMARY	AGENCY SUPPORT	LIMITING	CONTINGENCY
+36 H	Managing Volunteer Groups	Organize voluntary groups across PREMB zones	5	PREMB	Municipalities OVAD Chaplains PRSG Community Hubs Volunteer Groups	N/A	N/A
+36H	Medical Transportation - EMSPR	Activate collaborative agreements with private ambulance service companies and municipalities	13	EMSPR	Municipalities Private ambulance companies	Private ambulance companies may not have trained personnel	Create a training program for staff from private companies and facilitate the training process
+36 H	Evacuations from Private and Public Hospitals	Use hospital coalitions to assist in the process of identifying beds and spaces		EMSPR	PRDOH PREMB Hospital Coalitions Municipalities	Some hospitals do not report bed censuses	Request it through OMME staff

TIME	OPERATIONAL OBJECTIVES	TASK	ESF	AGENCY PRIMARY	AGENCY SUPPORT	LIMITING	CONTINGENCY
+36H	Medical Shelters	Activate medical and nurse personnel to report to the medical shelters to which they will be assigned. Activate Medical Reserve Corps Volunteer Group (MRC)	8	PRDOH PREMB	Private Companies NGOs OVAD	Number of medical personnel reduced due to emergency	Use non-clinical staff for non-clinical functions such as serving food, supplies, etc. Take into account the safety and management measures of patients positive to COVID-19.
+36 H	Support from Hospital Coalitions	Coordinate support resources such as generators and water for public and private hospitals	8	PRDOH	PREMB Hospital Coalitions	They may need parts for generators and/or mechanics	Hospitals must have inventory of parts and agreements with mechanics who can reach the hospital
+36 H	Support from Hospital Coalitions	Establish communication and data transmission every 12 hours between hospitals and the PRDOH	8	PRDOH	PREMB Hospital Coalitions	Internet or phone communication doesn't work	Use runners
+36 H	Support from Hospital Coalitions	Use alternative radio communication systems between PRDOH and public and private hospitals	8	PRDOH	PREMB Hospital Coalitions	Radio communication system not available	Runners who go to hospitals once a day can be coordinated to gather information and take it to the region

TIME	OPERATIONAL OBJECTIVES	TASK	ESF	AGENCY PRIMARY	AGENCY SUPPORT	LIMITING	CONTINGENCY
+36 H	Identifying emergency resources	Open PREMB's commodities warehouses	5	PREMB	PRSG PRNG	N/A	N/A
+36 H	Identifying emergency resources	Enable Staging Areas to Deploy Resources	5	PREMB	PRSG PRNG	N/A	N/A
+36 H	Incident management plans	Coordinate and synchronize incident management plans with the functions of state and federal agencies.	ALL	ALL	ALL	Agencies don't share their plans with their sister agencies	Establish a cross-review process between agencies to verify plans. Require agencies to have trained planners within their task team to make emergency plans or hire those services
+36 H	Managing resource and supply storage areas	Establish interoperable communication system.	5	PREMB	PRSG PRNG	Train staff in agencies as a communication unit leader	Many agencies do not have trained staff such as Communication Unit Leader

TIME	OPERATIONAL OBJECTIVES	TASK	ESF	AGENCY PRIMARY	AGENCY SUPPORT	LIMITING	CONTINGENCY
+36 H	Business	<p>Prioritize at the port and companies that have containers with food, water, electric generators, mechanical parts for motors, engine oils and filters, electrical parts and accessories, electrical cables, electrical pipe, communications equipment, rescue and emergency equipment, hygiene products, poles of all kinds, hardware, building material, fuel tanks and batteries.</p> <p>Plumbing material. Traffic light systems.</p> <p>Medical equipment, laboratory reagents. Assisted medical team. Shipments of Mercaptan, chlorine gas and polymer, HTH, formaldehyde. Safety and safety equipment.</p>	7	DHPR	<p>PREMB</p> <p>Ports</p> <p>AMA/DOT</p> <p>DTOP</p>	Lack of information to DHPR employees on emergency priority processes	Perform JITT with all employees and explain procedures under emergency circumstances
+36 H	Water	Make risk communication about water potability and ways to consume it	8	PRDOH	<p>PREMB</p> <p>PRASA</p>	N/A	N/A

TIME	OPERATIONAL OBJECTIVES	TASK	ESF	AGENCY PRIMARY	AGENCY SUPPORT	LIMITING	CONTINGENCY
+48H	Government Services	Monitoring individuals with electronic supervision that had arrived to shelters or camps. Check if evacuees are in the sexual offender list.	13	DOC NPPR	PR POLICE Special Arrests Unit	There is no communication and/or lack of staff	Staff from different regions of the Correction Department will visit homes and shelters
+48H	Hazardous Materials Operations (HAZMAT)	Maintain continuous monitoring of potential health and safety risks of responders and the general population	8	PRDOH	PREMB DRN HM 22 nd CST	N/A	N/A
+48H	Fatality Management	Ask all funeral homes for a report every 12 hours on the number of corpses received	8	NCFPR	PRDOH BEOC Health BEOC Funeral Subsector	No Communication Available	Assign PREMB Zones "runners" to collect information.
+48H	Public Safety	Provide security to fuel distribution centers "Fuel Racks" in Yabucoa, Peñuelas, Guaynabo and Bayamón	13	NPPR	PRNG DHPR DRNA SECURITY DSP DOJ DHS Pm	Not enough police officers are available	Distribute all state and municipal police assets. If necessary, staff from private companies will be hired.

TIME	OPERATIONAL OBJECTIVES	TASK	ESF	AGENCY PRIMARY	AGENCY SUPPORT	LIMITING	CONTINGENCY
+48H	Special Population	Evacuation of tourists	5, 6, 15, 17, 18, 19	PR Tourism Company	State Department PREMB BEOC Tourism Sector FEMA	There is no room in the hotels and the flights are cancelled	Establish shelters for tourists. Take into account the safety and management measures of patients positive to COVID-19.
+48H	Operational response	Set <i>Survivors Collection Points</i> (SCP)	9.6, 9.0	PREMB	ALL	N/A	N/A
+48H	Logistics	Establish kitchen equipment, water systems, portable sanitary systems for camps.	4, 6, 5	PREMB	DVPR DFPR All MME	It takes staff to complete this task	Use voluntary and municipal groups
+48H	Medical evacuations (Terrestrial and Air)	Request inventory of the morgue space in hospitals and funeral homes.	8, 17	PRDOH	PREMB NCFPR BEOC	There is no capacity to admit more corpses	Coordinate the transport of corpses for the Forensic Sciences Bureau, if necessary, DMORTs will be activated
+48H	Activating resource movement	Define a list of priorities and establish access controls that provide protection and security to government food and supplied warehouses.	13	NPPR	PRNG	Not enough police or National Guard personnel	Hire private security companies

TIME	OPERATIONAL OBJECTIVES	TASK	ESF	AGENCY PRIMARY	AGENCY SUPPORT	LIMITING	CONTINGENCY
+48H	Damage assessment	Initial assessment of structural damage by the Structural Engineer of the public facilities of the agency or municipality	5	PREMB	College of Engineers BEOC Aep	The Engineer is unable to communicate or does not arrive through self-activation	PREMB (self-activated) personnel previously trained by the College of Engineers so that you can carry out a preliminary structural damage assessment
+48H	Logistics	Identify medical countermeasures in the event of a decrease in the state reserve.	8	PRDOH	PREMB NPPR	N/A	N/A
+48H	Dogs specializing in SAR and veterinary care	Coordinate activities where this type of critical response is needed	9, 5	PREMB	PRUSAR Voluntary groups Veterinary	There are very few SAR grays in PR.	Use the available dogs in PR on critical missions and coordinate the bring from USA. Coordinate support from the College of Veterinary Physicians of PR for care.
+48H	Supply Chain	Activate agreements (MOUs) with food trucks and "small kitchens" to provide hot meal service in areas that have been isolated by the disaster (these already have the permits required by the state to operate)	5	PREMB	PRDOH NCBPR NTSP DVPR DEPR	They don't have inventory to supply food	Supply them so they can prepare food in emergency-isolated areas or where needed.

TIME	OPERATIONAL OBJECTIVES	TASK	ESF	AGENCY PRIMARY	AGENCY SUPPORT	LIMITING	CONTINGENCY
+48H	Supply Chain	Activate Salvation Army Kitchens to provide hot meal service in areas that have been isolated by the disaster (these already have the permits required by the state to operate)	5	Salvation Army	PRDOH NCBPR NTSP DVPR DEPR	They don't have inventory to supply food	Supply them so they can prepare food in emergency-isolated areas or where needed.
+48H	Incident Action Plans	Coordinate vaccination of municipal responders and volunteers	8	PRDOH	PREMB HHS	There is not enough inventory in PR or they were destroyed at the event	Establish communication with the CDOC to request the sending of additional vaccines
+48H	Supply Chain	Ask the private company, through BEOC, to report on your on-hand food inventory	5	PREMB	BEOC Measure Cud	BEOC representatives do not respond to request for information	Call the main PR distribution centers.
+48H	Supply Chain	Ask water bottling companies, through BEOC, to report on their on-hand inventory	5	PREMB	GSA FEMA	BEOC representatives do not respond to request for information	Call PR's main bottlers directly. (Coca-Cola, Pepsi, Cristalia)

TIME	OPERATIONAL OBJECTIVES	TASK	ESF	AGENCY PRIMARY	AGENCY SUPPORT	LIMITING	CONTINGENCY
+48H	Logistics	Confirm existing MOU's with Community Hubs request the necessary inventory lists, based on hub composition	5	PREMB	FEMA Community Hubs	N/A	N/A
+48H	Supply Chain	Coordinate meeting points with carriers and assign staging areas	5	NTSP	PREMB	There are no identified meeting points	Use parking lots from San Juan Convention Center, Sacred Heart Urban Train Station and AMA Terminal in Urb. San Francisco
+48H	Medical Services	Coordinate water supply for the operation of dialysis facilities that do not have drinking water service. NOTE: 576 liters of water should be calculated for each patient receiving treatment.	8	PRDOH	PREMB PRASA BEOC Health Sector	No Communications Available	Send the "runners" of the PREMB Zones
+48H	Responder Safety	Coordinate the distribution of aid, food and water to responders and employees affected by the event	ALL	ALL	ALL	The agency has no inventory to provide its employees with	Working as a priority to coordinate with other agencies the transfer of inventory needed to provide humanitarian assistance to employees affected by the event.

TIME	OPERATIONAL OBJECTIVES	TASK	ESF	AGENCY PRIMARY	AGENCY SUPPORT	LIMITING	CONTINGENCY
+48H	Public Safety	Provide security escorts to the containers during the transport of medicines, fuel, water and food.	13	NPPR	PRNG DHPR DRNA SECURITY DSP DOJ DHS Pm	Not enough police officers are available	Distribute all state and municipal police assets. If necessary, staff from private companies will be hired.
+48H	Food and Water Safety + Vector Control	Transmit in the media messages about the prevention of diseases such as Zika, Chikungunya, Dengue, Conjunctivitis, Leptospirosis, etc.	8	PRDOH	OMME PREMB DSP DAPR	The media is off-air	Develop propaganda on posters, loose sheets with pre-established messages and speakers around communities
+48H	Fatality Management	Request the count of direct deaths caused by the event	8	PRDOH NCFPR	PRDOH DRN HM DMORT BEOC Funeral Health Sub-sector	No Communication	Send PREMB Zones "runners" to collect this information. Use alternative communication methods such as Radio Amateurs, HF Radios and 100watt radios

TIME	OPERATIONAL OBJECTIVES	TASK	ESF	AGENCY PRIMARY	AGENCY SUPPORT	LIMITING	CONTINGENCY
+48H	Public Safety	Provide security in shelters, gas stations, ice plants, cell towers and critical infrastructure	13	NPPR	PRNG DHPR DRNA SECURITY DSP DOJ DHS Pm	Not enough cops	Use all law and state order agencies, municipalities and finally, hire private security companies
+48H	Food and Water Safety - Vector Control	Establish the protocol to make drinking water and make it known to the general public. Include water quality in wells that are not in the PRASA system.	8	PRDOH	DAPR PREMB	No communication	Instruct PRDOH staff to report to areas where there have been outbreaks before for lack of water power Orient citizens to boil water.
+48H	Disposal of Corpses	Ask ICFPR for a census of corpses it is receiving every 12 hours	13	DSP	DMORT ICFPR	No communication	Establish "Runners" system to and from PREMB Zones
+48 H	Opening of Access Roads	Geolocation in GIS systems and maps obstructions on roads and roads	3	DTOP	ACT Municipalities Private contractors NPPR PRNG PREMB	N/A	N/A

TIME	OPERATIONAL OBJECTIVES	TASK	ESF	AGENCY PRIMARY	AGENCY SUPPORT	LIMITING	CONTINGENCY
+48 H	Opening of Access Roads	Establish alternate roads to access isolated communities	3	DTOP	Municipalities Private contractors PRNG PREMB	There is no equipment in the municipality or DTOP	Make arrangements to activate private brigades.
+48H	TRIAGE and Medical Surge	Provide access "facilitate" public and private hospitals to get power generators, fuel supplies, food and water until basic utilities services are restored.	8	PRDOH	EMSPR PREMB FEMA NDMS Public and Private Hospitals Ambulance companies	Resource limitation, diesel, oxygen water, medical gases Lack of pre-agreements for supply.	Prioritize the response to establish a group of hospitals to support the utilities of other smaller hospitals in your region. Coordinate with FEMA, and with local companies supplies of generators, fuels, food, oxygen, medicines etc.
+48H	Transportation	Coordination of transport of affected and homeless people to shelters, with municipal school transport, AMA, ambulances, PREMBs vehicles etc.	6	DVPR	Municipalities AMA/DOT EMSPR PREMB	Not enough vehicles	Coordinate with taxi companies, school bus and public transport

TIME	OPERATIONAL OBJECTIVES	TASK	ESF	AGENCY PRIMARY	AGENCY SUPPORT	LIMITING	CONTINGENCY
+48H	Medical Services	Check follow-up drugs needed by evacuees. Determine if there are evacuees who need to be transferred to hospitals	8	PRDOH	PREMB DVPR EMSPR	Difficulty transporting and/or spaces in hospitals	Coordinate private ambulances/Check health service coalitions to determine if beds are available.
+48H	Shelter services (Water, cots, medicines, safety)	Send tanker trucks to fill tanks in shelters and camps.	6	PRASA	DVPR PREMB	Access to roads	Coordinate water collection with trucks in the municipality
+48H	Managing Volunteer Groups	Organize volunteer groups and assign tasks to support shelters	5	PREMB	N/A	N/A	N/A
+48H	Damage Assessment	Perform a critical infrastructure damage assessment	5	PREMB	DHS PSA BEOC ALL	Lack of staff, equipment, and obstruction of access	Coordinate the services of private contractors
+48 H	Managing Volunteer Groups	Coordinate voluntary services for assistance in shelters and communities in food, clothing, necessities, health and mental health services	5	PREMB	DVPR OVAD Chaplains PRSG Community Hubs Volunteer Groups	N/A	N/A

TIME	OPERATIONAL OBJECTIVES	TASK	ESF	AGENCY PRIMARY	AGENCY SUPPORT	LIMITING	CONTINGENCY
+48 H	Fatality Management	Activate DMORT units to receive potential body augmentation in NCFPR facilities.	8	NCFPR	PRDOH PREMB DMORT	There is no Preapproved state mass fatality management protocol	Develop a state protocol for mass fatality management
+48 H	Fatality Management	Deployment of resources and Preparation of the facility for the activation of the Victim Information Center (VIC).	8	PRDOH	Prema Ncf Family	Availability of ease.	Pre-identified alternate ease activation.
+48H	Supply Chain	Initial assessment of damage to PRNG armories to be used as Distribution Points	5	PRNG	PREMB	N/A	N/A
+48H	Logistics	Pre-assign in "Stand By" mission orders to truckers.	1	NTSP	PREMB	N/A	N/A
+ 48 H	Distribution Logistics and Supply Chain	Assign air missions for delivery of basic necessities in isolated communities. This will be done in coordination with the municipality to provide ground support	9	PREMB	PRNG NPPR USCG Dea FEMA ARMY	N/A	N/A

TIME	OPERATIONAL OBJECTIVES	TASK	ESF	AGENCY PRIMARY	AGENCY SUPPORT	LIMITING	CONTINGENCY
+48H	Orders to purchase resources and services	If communications systems collapse and there are no government purchasing systems, perform manual purchase order system with pre-identified purchase orders with pre-authorized numbers	7	GSA	PREMB	No official GSA buyers	Use buyers from other state agencies who have the same administrative power as an GSA buyer
+48 H	Maritime and air cargo transport	When the port opens assign Ports and NTSP personnel to monitor land landing and shipping operations	5	PREMB	NTSP PRPA	N/A	N/A
+120H	Agriculture and Animal Care	Situation assessment to establish assessment missions to ensure animal health and safety in livestock industries.	11	DAPR	PREMB	N/A	N/A
+48 H	Distribution Logistics and Supply Chain	Coordinate with MIDA the status of its partners and storage and collection capabilities of goods from the dock	5	PREMB FEMA	Shipowners PREMB FEMA Carriers AIPR Truckers' Associations	N/A	N/A

TIME	OPERATIONAL OBJECTIVES	TASK	ESF	AGENCY PRIMARY	AGENCY SUPPORT	LIMITING	CONTINGENCY
+48 H	Sharing information and communicating risk information	Report possible outbreak of contagious diseases.	8	PRDOH	PREMB	A Joint Information Office is not established with properly trained staff	Establish a JIC with trained staff
+48H	Public Works	Road cleaning, rehabilitation of primary bridges to allow access	3	DTOP	PREMB NPPR	No resources	Mobilizing Private contractors to establish brigades
+72 H	Identifying emergency resources	Start distribution of Critical Equipment (Generators, Water, Food and Fuel) to Critical Infrastructures	5	PREMB	FEMA	N/A	N/A
+72H	Incident Action Plans	Establish communication with Federal Emergency Support Functions (ESFs)	ALL	ALL	ALL	The Communication s system is unavailable or collapsed	Pre-agreed forms of resource requisition
+72H	Logistics	Mobilize fuel containers to supply generators with critical government facilities	1	NTSP	PREMB	There are only contracts with some of the containers	Making emergency contracts through the GSA
+72H	Logistics	Mobilize resources purchased or received by suppliers	7	PREMB FEMA	GSA	The warehouse is not Operational	Transport the purchased goods to the state warehouse

TIME	OPERATIONAL OBJECTIVES	TASK	ESF	AGENCY PRIMARY	AGENCY SUPPORT	LIMITING	CONTINGENCY
+72H	Special populations	PRDOH will check with dialysis centers that have sufficient supplies of essential materials for their patients for 10 days.	8	PRDOH	PREMB AIPR	N/A	N/A
+72H	Sort resources and private sector activation through the BEOC	Sort resources, activate contracts, mobilize resources, emergency purchases, and contact the private company to send an inventory of the essential resources they have available.	ALL	ALL	Contractors, Suppliers and Associations	No buyers available	Requesting waiver from the GSA to make purchases through an alternate procedure
+72H	Coordination of Search and Rescue missions	Continue PR NETC FOC. FOC resources. Response after event / Action plan completed and communicated to all SAR and PRUSAR responders	9	PREMB FEMA	PRNG / ESF #9 Federal Primary Agencies and Support Agencies	N/A	N/A
+72H	Agriculture and Animal Care	Perform operations for the management of exotic animals that have been intentionally released or escaped from their habitat	11	DRNA	DAPR PREMB	N/A	N/A

TIME	OPERATIONAL OBJECTIVES	TASK	ESF	AGENCY PRIMARY	AGENCY SUPPORT	LIMITING	CONTINGENCY
+72 H	Support from Hospital Coalitions	Activate PSDR and hospital coalitions agreements to meet demand for medical services	8	PRDOH	PREMB Hospital Coalitions	Coalitions will seek support from their institutions with utilities (diesel, water, medical gases)	PREMB will coordinate with suppliers so that hospitals and health institutions including dialysis centers take priority for utility dispatch
+72H	Sort resources and private sector activation through the BEOC	Identify additional resources needed to respond to the emergency not available in PR and order them through BEOC	5, 7	GSA	PREMB BEOC	Distance and arrival time from the United States	Request special air transport missions
+72H	Logistics	Activate collaboration agreements (MOUs) with truckers and transport companies	5, 7	GSA NTSP	PREMB DHPR OGP Gar	The agreements have not been finalized.	Establish contacts and make temporary agreements.
+72H	Fatality Management	Estimate the necessary storage space for the bodies of deceased persons in hospitals, funeral homes and NCFPR.	8	NCFPR	PRDOH BEOC Health BEOC Funeral Homes Sub Sector DMORT	No space available	Activate DMORTs

TIME	OPERATIONAL OBJECTIVES	TASK	ESF	AGENCY PRIMARY	AGENCY SUPPORT	LIMITING	CONTINGENCY
+72H	Logistics	Carry out a preliminary damage assessment and activate the <i>Regional Staging Area</i> where municipalities and surrounding municipalities can collect supplies	5	PREMB	OMME	<i>Regional Staging Areas</i> are not functional	Identify an alternate location and coordinate with PRNG and Community Hubs to receive supplies
+72H	Logistics	Conduct a preliminary damage assessment and activate Responder Distribution Points (RPOD's) – PR Fire Corps Negotiated Stations (NCBPR) to provide supplies to state, federal, and private sector responders registered with the State EOC.	4, 5, 6, 7, 17	DSP PREMB	NCBPR PRNG BEOC	Responder Distribution Points (RPOD's) are not functional	Identify an alternate location and coordinate with PRNG to receive supplies
+72	Logistics	Activate contracts with fuel distributors	7	GSA, NTSP	PREMB Gar OGP	Contracts expired. Contract with a single supplier.	Authorize emergency contract. Request emergency contract with all fuel suppliers.
+72H	Supply Chain	Activate PRNG personnel to PREMB warehouses for product distribution	5	PREMB	PRNG	N/A	N/A
+72H	Supply Chain	Activate Agreement (MOU) with PRNG and PR State Guard (PRSG)	5	PREMB PRNG GSA	FEMA	Hiring safety equipment and cargo handling	GSA to identify equipment suppliers

TIME	OPERATIONAL OBJECTIVES	TASK	ESF	AGENCY PRIMARY	AGENCY SUPPORT	LIMITING	CONTINGENCY
+72H	Supply Chain	Activate the "Mass Kitchen" program: restaurant kitchens, hotel kitchens, private school kitchens and food trucks to provide hot food to communities that were isolated.	5	PREMB	DEPR GSA	N/A	N/A
+72H	Logistics	Request inventory of regular and refrigerated trucks available for cargo transport	5.7	NTSP	PREMB	There is no communication with truckers or transport companies	Request a list from the NTSP about independent truckers and groups that are not included in the agreements (MOU)
+72H	Logistics	Request food and water inventory for responders and coordinators of state agencies.	5	DFPR GSA	PREMB	They don't have enough inventory	Make emergency purchases to supply the Agencies' EOC with water and food for 10 days.
+72H	Activating resource movement	Suppliers deliver supplies	7	PREMB, GSA	ALL	There aren't enough truckers to transport the cargo.	Provide suppliers with a list of carriers
+72H	Activating resource movement	Activation of the National Guard for the mobilization of essential products for open distribution centers and PODs	5	PRNG	GSA DEPR warehouse	N/A	N/A

TIME	OPERATIONAL OBJECTIVES	TASK	ESF	AGENCY PRIMARY	AGENCY SUPPORT	LIMITING	CONTINGENCY
+72H	Mapping and Geospatial Information Systems (GIS)	Review of existing maps on health facilities and pre-positioned resources.	8	PRDOH	BEOC Health Sector Health Services Coalitions	N/A	N/A
+72H	Health Services	Coordinate the treatment of methadone patients to receive the service	8	PRDOH	AMSSMCA PREMB DVPR	N/A	N/A
+72H	Public Safety	Coordinate traffic control tasks with volunteers and auxiliary police	13, 19	PR POLICE	PRNG DHPR DRNA SECURITY DSP DOJ DHS Pm	No training	Provide "JITT" training to volunteer groups to support police in traffic control. 4-hour shifts and a monitoring system of 1 police officer should be established for every 4 volunteers
+72H	Public Safety	Coordinate with the Department of Justice the availability of judges and prosecutors to prosecute those who commit crimes during this emergency period.	13	NPPR	DOJ Nie	N/A	N/A

TIME	OPERATIONAL OBJECTIVES	TASK	ESF	AGENCY PRIMARY	AGENCY SUPPORT	LIMITING	CONTINGENCY
+72H	Vector Control	Establish a protocol to address the control of animals and pests.	8	PRDOH	DAPR Usda DRNA BEOC Health Sector	N/A	N/A
+72H	Damage Assessment	Conducting a Family Census	8, 19	DFPR	DEPR	Lack of staff	Take on volunteers and staff from other government agencies
+72H	Logistics	Agencies must submit their preliminary damage assessments to identify their resource needs.	5	PREMB		No communication system	Bring written documents and request for assistance to PREMB personally
+72H	Communications	Coordinate the hiring of private companies to repair communications systems	2	NET	PREMB PR POLICE BEOC Communication s Sector	Set curfew	Communications contractors are considered essential emergency personnel
+72 H	Managing resource and supply storage areas	Maintain resource flow to storage areas to meet local needs.	5	PREMB	PRSG PRNG	Train agency staff in ICS's 8 core positions	Many agencies do not have trained personnel as logistic section chief

TIME	OPERATIONAL OBJECTIVES	TASK	ESF	AGENCY PRIMARY	AGENCY SUPPORT	LIMITING	CONTINGENCY
+72H	Transportation	Re-establish maritime transport services to Vieques and Culebra if sea and dock conditions have not been affected	1	DTOP	Atm USCG	The boats were broken down during the event	Hire maritime services from private contractors
+72H	Water	Coordinate the allocation and distribution of generators to perform the functions of treatment plants and substations	5	PRASA	PREMB	No resources available	Request FEMA assistance
+72H	Critical Infrastructure	To provide support and assistance to companies that are listed as critical infrastructures, according to DHS, to provide them with essential services and restore their operations.	5	PREMB	PRIDOCO DHS Protective Security Advisor FEMA Sba BANKS AIPR (Pharmaceutical) BEOC Chemicals Sector	N/A	N/A
+72H	Government Services	Activate all staff that are not essential to respond to assist in the clean-up and restoration of public services of agencies	ALL	ALL	ALL	N/A	N/A

TIME	OPERATIONAL OBJECTIVES	TASK	ESF	AGENCY PRIMARY	AGENCY SUPPORT	LIMITING	CONTINGENCY
+72H	Schools	The Public Buildings Authority and the Office of School Improvements will inspect school conditions and their damage to re-establish classes as soon as possible	6	DEPR	DVPR Aep PREMB PREPA PRASA NPPR PM's	N/A	N/A
+72H	Business	Encourage businesses to activate their Continuity of Operations Plan	5	PREMB	DHS+PSA	N/A	N/A
+72H	Logistics	Request inventory of regular and refrigerated trucks available for cargo transport	5.7	NTSP	PREMB	No communication with all guilds and trucker companies	Request NTSP list of independent truckers and groups not included in the main agreements.
+72H	Logistics	Activating Agreements (MOU's) with Community Hubs	5	PREMB	FEMA Community Hubs	N/A	N/A
+72H	Supply Chain	Request actual commodity inventories from PREMB and FEMA warehouses	5	PREMB FEMA		N/A	N/A

TIME	OPERATIONAL OBJECTIVES	TASK	ESF	AGENCY PRIMARY	AGENCY SUPPORT	LIMITING	CONTINGENCY
+72 H	Logistics	Truckers will start taking as many containers out of the dock to deliver to their owners.	1.5	PREMB NTSP	PRPA DHPR	Owners don't claim their containers	Take them to HUB meeting point for a load relay and speed up the process.
+72H	Logistics	Mobilize fuel carriers to supply critical infrastructure generators	1	NTSP	PREMB	There is no contract with certain carriers.	Make emergency contracts with GSA or mobilize product from another agency.
+72H	Population in General	Inventory of cots and personal hygiene products for areas designated as camps	6	DVPR	DFPR PREMB	Not enough cots or hygiene kits	Mobilize warehouse equipment or generate purchase orders
+72H	Medical evacuations (Terrestrial and Air)	Ask hospitals and funeral homes for current inventories of bodies in morgues	8	PRDOH	PREMB NCFPR	There are excess bodies in hospital morgues or there are bodies that are in communities.	Coordinate the transport of the bodies to refrigerated containers of the Institute of Forensic Sciences.
+72H	Special populations	Support municipalities in shelters with specialized earthquake specialists	6	DVPR	DFPR PRDOH OMME	There are no specialized staff	Perform JITT Use OVADs chaplains

TIME	OPERATIONAL OBJECTIVES	TASK	ESF	AGENCY PRIMARY	AGENCY SUPPORT	LIMITING	CONTINGENCY
+72 H	Disposal of Corpses	Request reporting of direct or indirect deaths of the incident	13	DSP	PRDOH DRN HM DMORT NCFPR Funeral Homes	N/A	N/A
+72 H	Disposal of Corpses	Ask funeral homes for a report of post-event funeral services every 24 hours	13	DSP	PRDOH DMORT NCFPR Funeral PREMB	No communication	OMME, PREMB or PRDOH staff make in-person visits to funeral homes
+72 H	Disposal of Corpses	Coordinate mass death management activities (Mass Fatality) Identification of corpses	13	DSP	PRDOH NCFPR DMORT Funeral	There is no space to store corpses in NCFPR or hospitals	Maintain DMORT operations
+72 H	Hazardous Materials Operations (HAZMAT)	Evaluate potential hazards of release of hazardous materials by pharmaceutical industries, chemical plants, etc.	10	DRN HM Cst	Puerto Rico College of Chemistry BEOC	Lack of chemical training	A hazardous materials curriculum can be established in your continuing education program

TIME	OPERATIONAL OBJECTIVES	TASK	ESF	AGENCY PRIMARY	AGENCY SUPPORT	LIMITING	CONTINGENCY
+72 H	Hazardous Materials Operations (HAZMAT)	Identify and assess impact in areas affected by hazardous materials. Coordinate response activities to prevent damage to the population and environment.	10	DRN HM, EPA, PREMB and FEMA	Municipalities, Zones and private contracts	Lack of specialized personnel and equipment.	Activate pre-agreements with private hazardous material handling companies.
+72 H	Debris Removal	Identify areas affected by chemical spills and debris content	10, 3	DRN HM Epa Cst	Municipalities Private contractors	Lack of trained personnel.	Coordinate JITT for municipal and volunteer staff.
+72 H	Search and Rescue (SAR)	Coordinate additional search and rescue equipment and materials with the federal government	9	PREMB	PRUSAR NPPR FEMA Volunteer Groups	Lack of equipment and materials	
+72 H	Dogs specializing in SAR and veterinary care	Provide food, water and rest care	9	PRUSAR	Voluntary groups Veterinary	Limited availability of this resource on the island.	Use the available dogs in PR on critical missions and coordinate the bring from USA. Coordinate support from the College of Veterinary Physicians of PR for care.

TIME	OPERATIONAL OBJECTIVES	TASK	ESF	AGENCY PRIMARY	AGENCY SUPPORT	LIMITING	CONTINGENCY
+72 H	Dogs specializing in SAR and veterinary care	Coordinate veterinary care for dogs	9	PRUSAR	Voluntary groups Veterinary	Limited availability of this resource on the island.	Use the available dogs in PR on critical missions and coordinate the bring from USA. Coordinate support from the College of Veterinary Physicians of PR for care.
+72 H	Volunteer Management	Assign OVAD shelter support services	6	PREMB DVPR DFPR NPPR	Red Cross OVAD Salvation Army	N/A	N/A
+72 H	Volunteer Management	Activation of the Auxiliary Police to support NPPR and transit	13	PREMB NPPR	Cert	N/A	N/A
+72 H	Volunteer Management	Coordinate voluntary services for assistance in shelters and communities in food, clothing, necessities, health and mental health services	6	PREMB DVPR DFPR NPPR	Red Cross OVAD Chaplains Salvation Army	N/A	N/A

TIME	OPERATIONAL OBJECTIVES	TASK	ESF	AGENCY PRIMARY	AGENCY SUPPORT	LIMITING	CONTINGENCY
+72 H	Evacuee tracking and family reunification	Share evacuee lists between shelters so evacuees can know if any family members are sheltered in another shelter	6	DVPR	DFPR PREMB	It's a long process and can be complicated	If a database can be created that is populated as shelters are opened with evacuee information in the end the identification process is going to be easier
+72 H	Evacuee tracking and family reunification	Shelter/camp managers will send evacuee lists to PREMB area and EOC later to create a centralized database	6	DVPR	DFPR PREMB	It's a long process and can be complicated	If a database can be created that is populated as shelters are opened with evacuee information in the end the identification process is going to be easier
+72 H	Medical Services	Send epidemiology personnel to shelters/camps to verify possibilities for outbreak development (scrubiasis, lice, conjunctivitis, gastroenteritis, etc.)	8	PRDOH	EMSPR DVPR PREMB	An outbreak is found to be unfolding	Infected people are isolated and prophylactic measures are taken for the rest of the evacuees
+72 H	Distribution Points	Activating and opening <i>Community Hubs</i>	5	PREMB	PRSG PREMB Community Hubs FEMA	N/A	N/A

TIME	OPERATIONAL OBJECTIVES	TASK	ESF	AGENCY PRIMARY	AGENCY SUPPORT	LIMITING	CONTINGENCY
+72 H	Shelter services (Water, cots, medicines, safety)	Request resources or reparations to those utilities that are essential for the well-being of evacuees	6	DVPR	DTOP PREMB PRDOH PRASA PREPA	N/A	N/A
+72 H	Managing Volunteer Groups	Activating Community Hubs and coordinating with Community Hubs to distribute aid to the communities they serve	5	PREMB	Municipalities OVAD Chaplains PRSG Community Hubs Volunteer Groups	N/A	N/A
+72 H	Managing Volunteer Groups	Assign specific missions to volunteer groups within the area or municipalities	5	PREMB	OVAD PRSG Community Hubs Volunteer Groups	N/A	N/A

TIME	OPERATIONAL OBJECTIVES	TASK	ESF	AGENCY PRIMARY	AGENCY SUPPORT	LIMITING	CONTINGENCY
+72 H	Agriculture and Animal Care	Coordination of preventive and pet care services with College of Veterinary Physicians, Animal Hostels of municipalities, animal protection society and pet products companies.	11	DAPR Usda DRNA	PR Veterinary College (Pending)	N/A	N/A
+72H	Medical Shelters	(Place where people need plugs, nurses, caregiver and a doctor)	8	PRDOH Prema	Private Companies NGOs OVAD	Not enough preset places	Use facilities such as CDTs, coliseums, meeting rooms, where multiple stretchers can be accommodated and a nurse and a doctor can be established
+72 H	Orders to purchase resources and services	If necessary, coordinate purchases with available suppliers even if they do not appear in the GSA Single Register of Bidders.	7	GSA	PREMB	N/A	N/A
+72 H	Public Health Monitoring and Epidemiological Watch	Activate protocols to monitor situations that may cause outbreaks or risks to the health of the population	8	PRDOH	DVPR PREMB	Shelters don't report cases of outbreaks on time	Epidemiologists have to visit shelters in a constant and coordinated way

TIME	OPERATIONAL OBJECTIVES	TASK	ESF	AGENCY PRIMARY	AGENCY SUPPORT	LIMITING	CONTINGENCY
+72H	Handling and distributing goods and essentials	Activate MOU with food trucks meals that help in the preparation of food as a contingency measure but also to supplement the food to the general population.	5	PREMB	PRDOH NCBPR NTSP DVPR DEPR	They don't have supplies of products to Prepare meals	Activate supplier chain to supply them so that they can Prepare and/or sell meals.
+72 H	Supply Chain	Help make animal feed available	11	DAPR	PREMB	N/A	N/A
+72 H	Supply Chain	Supply fuel to official government vehicles at GSA fuel distribution points	7	GSA	ALL	There are no staff operating the facilities	Access facilities with the presence of police and DSP
+72 H	Maps	Identify in Maps coordinates of resource storage areas.	5	PREMB	PRSG PRNG	N/A	N/A
+72 H	Maps	Identify coordinate maps of addresses of affected public buildings, open shelters, collapsed bridges, blocked roads, dams, flooded areas, collapses etc.	5	PREMB	PREMB DTOP	You don't have up-to-date information	This is a project that can be done before the emergency arrives and have a database with this information available
+72 H	Maps	Identify on coordinate maps of supply distribution centers (community hubs).	5	PREMB	PRSG PRNG	You don't have up-to-date information	This is a project that can be done before the emergency arrives and have a database with this information available

TIME	OPERATIONAL OBJECTIVES	TASK	ESF	AGENCY PRIMARY	AGENCY SUPPORT	LIMITING	CONTINGENCY
+72 H	Logistics	Maintain flow of carriers and freight haulers on the piers 24/7. ***	5	PREMB	PRPA DHPR NTSP		
+72 H	Maritime and air cargo transport	Provide truckers with chassis swap areas so they can continue to operate on the dock by setting specific points to diversify cargo and create a second distribution point outside the dock and prevent congestion	5	PREMB	Shipowners PREMB FEMA Carrier Associations Trade and Business Associations		NOTE: The lack of medicines, electrical parts for the grid, generators, therapy machines, medical equipment, baby formulas, parts of cisterns and diesel engines and thousands of more essential products remained for weeks on the piers indirectly causing the deaths of hundreds of people with special needs. This excessive delay was due to many factors that were combined at different levels that affected the efficient operation of the port. The biggest problem was the blurring of priorities from the point of origin, excessive bureaucracy, to distribution through carriers.

TIME	OPERATIONAL OBJECTIVES	TASK	ESF	AGENCY PRIMARY	AGENCY SUPPORT	LIMITING	CONTINGENCY
+72 H	Distribution Logistics and Supply Chain	Provide support to re-establish the supply chain of wholesalers and supermarkets	5	PREMB FEMA	Shipowners PREMB FEMA Carriers Measure	N/A	N/A
+72 H	Maritime and air cargo transport	Assign truckers to the air cargo movement process that arrives at Muñiz Base and Aguadilla Airport.	5	PREMB	NTSP FEMA PRNG	N/A	N/A
+72 H	Distribution Logistics and Supply Chain	Maintain oversight of the supply chain through wholesalers	5	PREMB	Measure NTSP FEMA	N/A	N/A
+72 H	Distribution Logistics and Supply Chain	Establish distribution routes and authorized Distribution Centers	5	PREMB	DTOP NTSP	N/A	N/A
+72H	Communications	Removal of debris obstructing access to cell towers and main communication repeater locations	3	DTOP	Municipalities	There are no resources to open a gap to those places	Mobilization Private contractors to establish road and road cleanup brigades to SITES

TIME	OPERATIONAL OBJECTIVES	TASK	ESF	AGENCY PRIMARY	AGENCY SUPPORT	LIMITING	CONTINGENCY
+72H	Communications	Coordination with tele-communications companies to activate their Network repair brigades. (AT&T, Sure, Open Sprint, T Mobile, etc.)	2	NET	PREMB PREPA DTOP Municipalities	N/A	N/A
+72H	Communications	Coordination with tele communications companies (AT&T, Claro, Open Sprint, T Mobile, etc.) to activate mobile communication towers	2	NET	PREMB PREPA DTOP Municipalities	They don't have the equipment available on the island.	Start making arrangements for these companies to acquire those teams and develop those capabilities from now on
+72 H	Water	Coordinate laboratory tests to verify water reliability	5	PRASA	PREMB	Laboratories were affected	Use state or private labs on the island that can do the tests
+72 H	Critical Infrastructure	Support companies classified as critical infrastructure so that they can access essential services to re-establish their operations	5	PREMB	PRIDOCO DHS Protective Security Advisor FEMA Sba AIPR (Pharmaceuticals)	N/A	N/A

TIME	OPERATIONAL OBJECTIVES	TASK	ESF	AGENCY PRIMARY	AGENCY SUPPORT	LIMITING	CONTINGENCY
+72 H	Fatality Management	Confirm number of direct fatalities per event by comparing the information collected through PREMB and PRDOH. Send this information to the NCFPR to keep the actual accounting	8	NCFPR	PRDOH PREMB DMORT	There is no Preapproved state mass fatality management protocol	Develop a state protocol for mass fatality management
+96H	Medical evacuations (Terrestrial and Air)	Identify possible <i>Federal Medical Stations (FMS)</i> Places that can serve as FMS previously are established. It compares to a <i>check list with</i> the requirements. You must have the previously identified locations so that they have all the necessary utilities	8	PRDOH	PREMB Municipalities	Not enough FMS certified	Inspect possible places to settle in. It may be considered using available hospital floors and providing them with staff and utilities to that hospital.
+96H	Medical evacuations (Terrestrial and Air)	Supplement hotel availability list	8	PRDOH	PREMB Tourism	There are no caregivers or nurses to care for patients in hotels	Call volunteers and, if not enough, hire emergency services.
+96H	Special populations	Mobilization of foreigners and tourists	5	Tourism	State Department. PREMB	There is no place in hotels or cancelled flights	Enable a tourist shelter if needed
+96H	Special populations	Communication system with deaf people instructions to instruct them to call 9-1-1 or 3-1-1	5	9-1-1	PREMB	N/A	N/A

TIME	OPERATIONAL OBJECTIVES	TASK	ESF	AGENCY PRIMARY	AGENCY SUPPORT	LIMITING	CONTINGENCY
+120H	Agriculture and Animal Care	Watch of wild animals in captivity (zoos) that have not escaped due to the consequences of the event	11	DRNA	DAPR PREMB	N/A	N/A
+120 H	Donation Management	Recommend donations in cash so that you can be more efficient and immediately inject the affected economy. Managing in-kind donations creates logistical difficulties affecting the supply chain. It must coordinate with the American Red Cross and nonutilities.	5	DFPR	PREMB Red Cross VOAD NGOs	N/A	N/A
+120H	Debris Removal	Identify debris collection areas	3	DRN HM Epa	Municipalities Private contractors	Lack of available collection areas	Coordinate temporarily available areas with the PR Land Authority and municipalities.
+120H	Agriculture and Animal Care	Assess the locally produced food chain and support local businesses	5	PREMB	Measure	N/A	N/A
+120H	Handling and distributing goods and essentials	Continuation of operations of distribution centers by PREMBs towards Community Hubs.	5	PREMB	FEMA Community Hubs	N/A	N/A

TIME	OPERATIONAL OBJECTIVES	TASK	ESF	AGENCY PRIMARY	AGENCY SUPPORT	LIMITING	CONTINGENCY
+120 H	Orders to purchase resources and services	Track emergency purchases.	7	GSA	PREMB	N/A	N/A
+120 H	Orders to purchase resources and services	Coordinate with GSA purchases for services and resources needed during incident response.	7	GSA	PREMB	Post-event tax problems for not following government channels	Make expedited processes to certify these suppliers as GSA bidders in case of emergency only
+120 H	Sustain Interoperable Communications	Coordinate parts and equipment delivery and supplies to rebuild Communications towers and antennas.	5	PREMB	AIPR Telecom	N/A	N/A
+120 H	Incident management plans	Maintain the flow of incident management plans for periods as established in the EOC.	ALL	ALL	ALL	N/A	N/A
+120 H	Incident management plans	Re-evaluate incident management plans as needed.	ALL	PREMB	ALL	Agencies don't share their plans with their sister agencies	Establish a cross-review process between agencies to verify plans. Require agencies to have trained planners within their task team to make emergency plans or hire those services

TIME	OPERATIONAL OBJECTIVES	TASK	ESF	AGENCY PRIMARY	AGENCY SUPPORT	LIMITING	CONTINGENCY
+120H	Fatality Management	Coordinate cadaver identification activities, transfer to forensic sciences	8	PRDOH PREMB	NCFPR PRDOH DMORT	An excessive amount of corpses Victims of trauma and mass deaths. Lack of space to store corpses.	Use published methods to identify corpses in incidents of mass fatalities. Coordinate with FEMA DMORT activation and refrigerated containers.
+120H	Critical Infrastructure	Assess the economic impact of Private Critical Infrastructure	5, 17	PRIDOCO	PREMB BEOC Sector Leaders	Companies don't want to share their information	Request support from DHS contacts, Protective Security Advisor, and the BEOC contact
+120H	Transportation	Coordinate transportation and escort services for volunteers for support in shelters and communities	6	DVPR	Municipalities AMA/DOT EMSPR PREMB	Not enough vehicles	Coordinate with taxi companies, school buses and public transport vehicles.
+120 H	Disposal of Corpses	Identify alternate places for storing human corpses	13	DSP	PRDOH NCFPR DMORT Funeral	There is no space to store corpses in NCFPR or hospitals	Maintain DMORT operations. Buy Refrigerated Cars

TIME	OPERATIONAL OBJECTIVES	TASK	ESF	AGENCY PRIMARY	AGENCY SUPPORT	LIMITING	CONTINGENCY
+120 H	Communications	Coordinate private contractors to respond and work on restoring government systems	2	NET	PREMB NPPR	Private contractors think they can't work by curfew	Inform Communications Technicians that they are considered ESSENTIAL EMERGENCY STAFF
+120H	Fatality Management	Establish the process of identifying corpses	8	PRDOH NCFPR	PRDOH DMORT BEOC Health Sector Funeral homes Sub sector	N/A	N/A
+120H	Fatality Management	Coordinate the management of mass victims, mass deaths and identification of corpses.	8	PRDOH NCFPR	PRDOH DMORT BEOC Funeral Health Sub sector NETC	There is no room in hospital morgues or NCFPR to store corpses	Maintain DMORT operations and purchase refrigerated containers
+120	Government Services	Document all damage caused by the event, estimate costs and present them to the agency's insurance company	ALL	ALL	ALL	N/A	N/A

TIME	OPERATIONAL OBJECTIVES	TASK	ESF	AGENCY PRIMARY	AGENCY SUPPORT	LIMITING	CONTINGENCY
+120H	Water	Recovery from damage to PRASA reservoirs, dams, treatment plants, pumping plants and infrastructure.	5	PRASA	PREMB DAPR PRDOH DRN HM FEMA	N/A	N/A
+120H	Energy	Damage assessment to the generation and distribution system. Inventory parts and place purchase orders.	12	PREPA	PREMB	ESA ships are not in service	Using NPPR ships or contracting air transfer services with helicopter companies with commercial licenses
+120H	Identifying emergency resources	Assess the need for resources and, if not sufficient, seek support from FEMA with additional resources	5	PREMB	FEMA	N/A	N/A
+120H	Donation Management	Activation and coordination of staff for donation collection center to carry out inventory and classification of health and medical products and resources.	5	PREMB	DFPR	N/A	N/A
+120H	Communications	Deploy and program mobile and portable communication systems, including P25 interoperable consoles and tactical channels	5	PREMB	NET Municipalities FCC	Municipalities do not have interoperable consoles	Activate Homeland Security Regions for Interoperability in Communications

TIME	OPERATIONAL OBJECTIVES	TASK	ESF	AGENCY PRIMARY	AGENCY SUPPORT	LIMITING	CONTINGENCY
+120H	Contracts and Agreements	Each purchase order issued will be recorded and controlled to ensure that the supplier complies with the order or service requested and the supplier also receives the corresponding payment	7	GSA	PREMB OGP DHPR	N/A	N/A

Phase 3 - Recovery

TIME	OPERATIONAL FUNCTION	TASK	ESF	PRIMARY AGENCY	SUPPORT AGENCY	LIMITATION	CONTINGENCY
30 days	Distribution Logistics and Supply Chain	Maintain constant monitoring of food, water and drug distribution	5	PREMB	FEMA PRNG PRSG	N/A	N/A
30 days	Government Services	Monitoring individuals with electronic supervision who were in shelters or at family home to continue supervision	13	DOC	NPPR PRNG	No communication Lack of staff or utilities	Staff from the Region Correction Units to Visit Shelters and Family Homes
30 days	Government Services	Coordinate security and facility protection services using, security services companies, internal security personnel, state police or state police	13	NPPR	Aep OGP SECURITY FEMA PREMB DEPR	There aren't enough cops	Use law and order agency resources or hire private security services
30 days	Schools	Coordinate help with electricity generators and water tanks for schools. If they don't have service yet.	5	PREMB	DEPR Aep PREMB PREPA	No resources	Request assistance from FEMA

TIME	OPERATIONAL FUNCTION	TASK	ESF	PRIMARY AGENCY	SUPPORT AGENCY	LIMITATION	CONTINGENCY
					PRASA NPPR PMs'		
30 Days	Water	Start mobilizing resources to repair systems that have been affected by the emergency	5	PRASA	PREMB	No access to affected areas	Use alternate routes established by DTOP or request help from the municipality
30 Days	Debris Removal AND HAZMAT	Provide assistance to farmers in removing contaminated material due to pesticide spills and other	10	DRN HM, DAPR, EPA NBCPR	OMME BEOC Epa	Lack of resources, equipment and/or staff	Coordinate the support of the Farmers Association, contractors and the USDA
30 Days	Government Services	Initiate damage repair assessment to government structures and facilities.	ALL	ALL	ALL	N/A	N/A
30 Days	Government Services	Document all damage caused by the emergency and make cost estimates to be presented to the agency's insurance company	ALL	ALL	ALL	N/A	N/A
30 Days	Business	Coordinate through partnerships the availability of private resources that may be needed by the	5	PREMB	AIPR DHS+PSA	N/A	N/A

TIME	OPERATIONAL FUNCTION	TASK	ESF	PRIMARY AGENCY	SUPPORT AGENCY	LIMITATION	CONTINGENCY
		government to respond to the emergency.					
30 days	Communications	Coordinate private contractors to respond and work on system restoration	2	NET	PREMB PREPA DTOP Municipalities	Contractors cannot access Sites	DTOP will make efforts to open access to critical locations
30 days	Communications	Coordination with tele communications companies (AT&T, Claro, Open Sprint, T Mobile, etc.) to activate their Network repair brigades	2	NET	PREMB PREPA DTOP Municipalities	Contractors cannot access Sites	DTOP will make efforts to open access to critical locations
30 days	Communications	Support communications companies to access fuel for their generators where there are antennas and repeaters	5	PREMB	NET NTSP	N/A	N/A
30 days	Communications	Establish work plan to energize locations with repeaters and antennas used by federal, state, and state agencies	12	PREPA	NET PREMB	N/A	N/A

TIME	OPERATIONAL FUNCTION	TASK	ESF	PRIMARY AGENCY	SUPPORT AGENCY	LIMITATION	CONTINGENCY
30 days	Safety of Responders and Coordinators	Coordinate support tasks with volunteer staff	5	PREMB	ALL	There is no organized volunteer corps	Activate CERT groups, groups of volunteer rescuers already previously organized
30 days	Safety of Responders and Coordinators	Ensuring that alternate human resources are available for continuity of response	ALL	ALL	ALL	N/A	N/A
30 days	Public Safety	Summon volunteers and auxiliary police for transit management assistance	13	NPPR	PRNG DHPR DRNA SECURITY DSP DOJ DHS PM's Courts	Not enough government personnel to make traffic	Auxiliary police and other volunteer groups are offered a JITT to help police officers in the lights and set up shift changes every 4 hours. A monitoring system of 1 State Police would be established for every 4 volunteers to maintain control and rest the policemen
30 days	Debris Removal	Segregate areas by type of debris to be received	3	DRN HM Epa	Municipalities Private contractors	Lack of staff and specialized equipment	Coordinate with private contractors, local craftsmen and locksmiths and offer JITT for volunteer staff available.

TIME	OPERATIONAL FUNCTION	TASK	ESF	PRIMARY AGENCY	SUPPORT AGENCY	LIMITATION	CONTINGENCY
30 days	Public Works	Coordinate debris collection with municipalities.	3	DTOP	PREMB Municipalities FEMA USACE	No resources	Use contractors through FEMA and USACE
30 days	Public Works	Coordinate repairs to bridges and roads with private contracts and Corps of Engineers.	3	DTOP	PREMB Municipalities FEMA USACE	No resources	Use contractors through FEMA and USACE
30 days	Transportation	Re-establishing the Call and Travel service	1	DTOP	AMA/DOT	N/A	N/A
30 days	Transportation	Re-establishing driver services and licenses	1	DTOP	CESCO	Excess customers and under staff	Consider privatize services through management services and have the customer choose the service provider and pay for those services
30 days	Energy	Coordination with ESA work brigades and U.S. brigades to repair affected lines or areas of infrastructure.	12	PREPA	FEMA USACE	N/A	N/A
30 days	Energy	Coordinate the collection of materials and supplies for	12	PREPA	PREMB	N/A	N/A

TIME	OPERATIONAL FUNCTION	TASK	ESF	PRIMARY AGENCY	SUPPORT AGENCY	LIMITATION	CONTINGENCY
		the electrical power system in the Ports.			DHPR Ports		
30 days	Government Services	Relocate essential functions of agencies in alternate locations to provide services in a temporary way if necessary	ALL	ALL	ALL	N/A	N/A
30 days	Government Services	Establish mobile service offices with alternate schedules to serve and inform the public.	ALL	ALL	ALL	N/A	N/A
30 days	Government Services	Coordination with service and product providers to deliver equipment and materials essential to the agency's response and recovery	ALL, 14	ALL	ALL	N/A	N/A
30 days	Government Services	Identification of funds for payment of repairs and replacement of agency equipment	ALL	ALL	ALL	N/A	N/A
30 days	Schools	Public Buildings Authority and Office for the improvement of schools check conditions and assess damage in order to	6, 14	DEPR	DVPR Aep PREMB	N/A	N/A

TIME	OPERATIONAL FUNCTION	TASK	ESF	PRIMARY AGENCY	SUPPORT AGENCY	LIMITATION	CONTINGENCY
		restart classes as soon as possible.			PREPA PRASA NPPR PMs'		
30 days	Transportation	Continue coordination of relocation of evacuees with relatives	6	DVPR	Municipalities AMA/DOT EMSPR PREMB	N/A	N/A
30 days	Volunteer Management	Demobilization of volunteers at the end of missions	5	PREMB	Red Cross, Salvation Army, DVPR	Tasks for volunteers who are not defined	Develop from now on a check list of tasks in which volunteers can be employed
30 days	Evacuee tracking and family reunification	Coordinate evacuee relocation process with family members	6, 14	DVPR	DFPR PREMB	N/A	N/A
30 days	Evacuee feeding	Establish menus taking into account the needs of evacuees and their food requirements	5, 14	DEPR	PREMB PRDOH	There are people with diabetes, high pressure, kidney patients	Establish menus that meet the food requirements of these evacuees

TIME	OPERATIONAL FUNCTION	TASK	ESF	PRIMARY AGENCY	SUPPORT AGENCY	LIMITATION	CONTINGENCY
						among evacuees	
30 days	Shelter services (Water, cots, medicines, safety)	Assess how many evacuees can already return to their homes and make appropriate arrangements	6, 14	DVPR OMME	DFPR PREMB	There are going to be evacuees who don't want to leave the shelters	Policies must be established to relocate these evacuees and liberate shelters. Run a public information campaign. Offer help to over the homes of evacuees.
30 days	Shelter services (Water, cots, medicines, safety)	Assess the need to keep the shelter open, consider consolidating shelters with others	6	DVPR	DFPR PREMB	There are evacuees who don't want to leave	Condition the homes of these evacuees to encourage them to return to their areas
30 days	Shelter services (Water, cots, medicines, safety)	Prioritize closing shelters and camps that are schools or near schools in use so that classes can resume as soon as possible. If there are schools that are closed, they can now be conditioned as possible shelters. As long as they are not being used as shelters, they can be used as emergency management training centers.	6	DVPR	DFPR PREMB	Maintaining these closed schools can be expensive	They may be transferred to municipalities to maintain them, to non-profit entities or to rent to private institutions that offer training

TIME	OPERATIONAL FUNCTION	TASK	ESF	PRIMARY AGENCY	SUPPORT AGENCY	LIMITATION	CONTINGENCY
30 days	Managing Volunteer Groups	Demobilize voluntary groups or reassign tasks	5	PREMB	Salvation Army OVAD Red Cross TEAM Rubicon	There is no clear description of the tasks these volunteers can perform	Assign case management, documentation, inspection, support, or other tasks that, after 30 days of emergency, still require a lot of support staff.
30 days	Donation Management	Coordination of donation from abroad will be coordinated through the Department of the Family, Port Authority and PREMB.	5	DFPR	PREMB Red Cross VOAD NGOs	No warehouses are available to handle donations	Use closed facilities and closed government buildings that can be enabled as warehouses
30 days	Donation Management	Coordination of protection and security for storage and distribution of donations.	5	DFPR	PREMB NPPR	Not enough Watch personnel	Establish engineering controls, electronic Watch systems in selected warehouses
30 days	Donation Management	Coordinate distribution of donations through <i>Community hubs</i> , American Red Cross, VOAD, churches, community organizations etc.	5	PREMB	PRSG PRNG	Donations are lost because of a lack of guidelines on how to handle them	Establish a protocol to differentiate donations from durable medical equipment, medications, food, and perishable items versus durable items.
30 days	Donation Management	Distribution of donations to municipalities and non-profit entities.	5	DFPR	PREMB First Lady Office	N/A	N/A

TIME	OPERATIONAL FUNCTION	TASK	ESF	PRIMARY AGENCY	SUPPORT AGENCY	LIMITATION	CONTINGENCY
30 days	Donation Management	Maintain a trace and documentation of donations received and distributed.	5	DFPR	PREMB	N/A	N/A
30 days	Distribution Points	Re-supplying Distribution Centers	5	PREMB	PRSG FEMA	N/A	N/A
30 days	Agriculture and Animal Care	Estimate the damage to the economy in agriculture	11	DAPR Usda DRNA	PR Veterinary College	N/A	N/A
30 days	Agriculture and Animal Care	Coordination of sanitary conditions for the processing of livestock and birds for human consumption by state and federal agencies	11	DAPR Usda DRNA	PR Veterinary College	N/A	N/A
30 days	Agriculture and Animal Care	Continuous assessment of the impact on agriculture and care of domestic and farm animals	11	DAPR Usda DRNA	PR Veterinary College	N/A	N/A
30 days	Special populations	Taking response measures and taking care of people who have physical and mental disabilities according to their condition	8	PRDOH	DFPR PREMB	Responders treat people with disabilities as patients and assign them to the	It must be clearly established that a person with a disability is NOT a patient unless he or she has an illness or trauma. It is imperative to strengthen

TIME	OPERATIONAL FUNCTION	TASK	ESF	PRIMARY AGENCY	SUPPORT AGENCY	LIMITATION	CONTINGENCY
						health department	the mental health component on the island.
30 days	Populations with functional and access needs	Handling cases of people with cognitive disabilities or mental health problems	8	PRDOH	NPPR PREMB NMEPR	There are no open courts to generate a transfer order for mental patients	In the event of a disaster, an alternative mechanism must be developed to enter people with mental disabilities and to become violent to facilitate the transfer of that patient.
30 days	Public Health Monitoring and Epidemiological Watch	Assess the need to establish and open Federal Medical Station (50 patients per FMS)	8	PRDOH PREMB		FMSs have preset requirements to be able to open them	Evaluate multiple locations and list eligible facilities to be an FMS. Conduct this study from before the emergency and have a database of these pre-selected locations
30 days	Public Health Monitoring and Epidemiological Watch	Assess the need to apply for the program and activate the Veterans Affairs National Disaster Medical System (NDMS) (20 beds are requested per hospital and US doctors arrive to increase hospital capacity)	8	PRDOH PREMB		Many hospitals are going to be over squatting patients	Open FMS, use a hospital vessel (<i>Comfort</i>) that coordinates to arrive earlier in the emergency if possible.

TIME	OPERATIONAL FUNCTION	TASK	ESF	PRIMARY AGENCY	SUPPORT AGENCY	LIMITATION	CONTINGENCY
30 days	Public Health Monitoring and Epidemiological Watch	Assess the need to request NDMS air transportation through the US Air Force	8	PRDOH PREMB		Not enough epidemiologists	Temporary hire epidemiological nurses. Request that resource from HHS
30 days	Public Health Monitoring and Epidemiological Watch	Mental Health + Psychological First Aid Assessments	8	PRDOH	NGOs	N/A	N/A
30 days	Fatality Management	Resources for handling animal mortality.	11	DAPR	DRN HM Usda	N/A	N/A
30 days	Fatality Management	Establish contact with hospitals to report fatalities for reasons indirect to the event (deaths from lack of electrical energy in patients who rely on them to live, etc.)	8	PRDOH	NCFPR PREMB DMORT	No data communication	Using hospital radio communication systems
30 days	Fatality Management	Perform NCFPR assessment of how many people died for indirect post-event reasons (lack of medication, lack of oxygen or lack of treatment of pre-existing conditions)	13	NCFPR	PRDOH PREMB DMORT	N/A	N/A

TIME	OPERATIONAL FUNCTION	TASK	ESF	PRIMARY AGENCY	SUPPORT AGENCY	LIMITATION	CONTINGENCY
30 days	Strategic National Stockpile (SNS)	The PRDOH will coordinate the routes and recipients of SNS medicines	8	PRDOH	PREMB NPPR HHS PM's	N/A	N/A
30 days	Strategic National Stockpile (SNS)	The PRDOH will coordinate with the NPPR the escort of the trucks that go with the medicines	8	PRDOH	DTOP NPPR HHS PM's	N/A	N/A
30 days	Strategic National Stockpile (SNS)	If necessary, the PRDOH and your SNS team will request a <i>12 hours Push Package</i> with 121 special containers through USAF aircraft. This will be done if the SNS reserve does not meet the need of the country	8	PRDOH	NPPR HHS PM's	N/A	N/A
30 days	Support from Hospital Coalitions	Coordinate support resources such as generators and water for public and private hospitals	8	PRDOH BEOC	PREMB Hospital Coalitions	N/A	N/A

TIME	OPERATIONAL FUNCTION	TASK	ESF	PRIMARY AGENCY	SUPPORT AGENCY	LIMITATION	CONTINGENCY
30 days	Support from Hospital Coalitions	Establish communication and data transmission every 12 hours between hospitals and the PRDOH	8, 14	PRDOH	Prema Hospital Coalitions	N/A	N/A
30 days	Relocation or reconstruction of homes	Censing partially or completely destroyed or uninhabitable homes. Activate federal temporary housing programs	6, 14	DVPR	Municipalities	No state resources	Activate federal programs
30 days	Relocation or reconstruction of homes	Coordinate volunteer teams in conjunction with municipal, state and federal agencies for the installation of temporary ceilings, awnings.	6, 14	DVPR	Municipalities	N/A	N/A
30 days	Relocation or reconstruction of homes	Develop citizenship-oriented campaigns in conjunction with the government, federal agencies, and insurance companies on flood, earthquake, and fire insurance.	6	DVPR	Municipalities	Cost of Policies	Financing
30 days	Relocation or reconstruction of homes	Develop a program to grant property titles to residence owners in order to qualify for FEMA aid.	6	DVPR	Municipalities/FEMA	Mostly legal problems, tract	Develop state government program to grant title.

TIME	OPERATIONAL FUNCTION	TASK	ESF	PRIMARY AGENCY	SUPPORT AGENCY	LIMITATION	CONTINGENCY
30 days	Debris Management	Coordinate debris collection with municipal resources, DTOP and US brigades (private contractors).	3, 10	DTOP/Municipalities	DRN HM/USACE	Lack of equipment, trucks and pick-up machinery	Bring Brigades from USA
30 days	Debris Management	Guide municipal and state personnel on counting processes in the collection of debris and vegetative material in order to claim reimbursements of expenses from the federal government.	3, 10, 14	DTOP/Municipalities	DRN HM/USACE	Disrecognition in the processes for working reimbursement (FEMA)	Guidance for lack of FEMA and auditing processes
30 days	Debris Management	Prioritize debris collection by blocking roads and access to communities.	3, 10, 14	DTOP/Municipalities	DRN HM/USACE	Municipal coffers in precarious	State aid to hire brigades
30 days	Debris Management	Maintain a debris collection program in communities and neighborhoods.	3, 14, 10,	DTOP/Municipalities		N/A	N/A
30 days	Debris Management	Maintain debris collection program in public places.	3, 10, 14	DTOP/Municipalities		N/A	N/A
30 days	Debris Management	Coordinate with municipalities, DTOP and private contracts the collection and reduction of debris.	3, 10, 14	DTOP/Municipalities		N/A	N/A

TIME	OPERATIONAL FUNCTION	TASK	ESF	PRIMARY AGENCY	SUPPORT AGENCY	LIMITATION	CONTINGENCY
30 days	Debris Management	Implement the recycling process to separate vegetative materials, metals and other products.	3, 10	DTOP	Mun	N/A	N/A
30 days	Debris Management	Establish temporary debris disposal centers and then move to final disposal centers.	3, 10	DTOP	Mun	N/A	N/A
30 days +	Mitigation activities: Restoring utilities	Review and/or prepare mitigation plans for government utilities and infrastructure.	14.5	PREMB	Mun	N/A	N/A
30 days +	Mitigation activities: Restoring utilities	Review flood zone maps to mitigate effects on flooded areas.	14.5	PREMB	Mun	N/A	N/A
30 days +	Mitigation activities: Restoring utilities	Replace and strengthen collapsed bridges.	3	DTOP	USACE	N/A	N/A
30 days +	Mitigation activities: Restoring utilities	Evaluate river and broken pipeline projects.	14.5	PREMB/Municipalities	USACE	N/A	N/A
30 days +	Mitigation activities: Restoring utilities	Develop projects to mitigate areas of land collapses	14.5	PREMB/Municipalities	USACE	N/A	N/A

TIME	OPERATIONAL FUNCTION	TASK	ESF	PRIMARY AGENCY	SUPPORT AGENCY	LIMITATION	CONTINGENCY
30 days +	Mitigation activities: Restoring utilities	Repair and replacement of labeling and traffic controls	1, 13	DTOP	NPPR	Lack of knowledge to work with all stages of the mitigation plan	Training
30 days +	Restoring economics and business	Include as a priority the energization of commercial and business areas.	12	PREPA		Lack of inventory	US Contractors
30 days +	Restoring economics and business	Facilitate the landing and hauling processes of freight containers on the piers to continuously supply inventories.	7	DHPR		Tax requirements, SURI and regulation that delay the process	Dispense lift to speed up the movement of containers on the piers
30 days +	Restoring economics and business	Facilitate the dispatch of fuels to operate electric generators in business.	7, 14	GSA	PREMB	N/A	N/A
30 days +	Restoring economics and business	Call for donations to be made in cash and awarded through non-profit institutions (CRA) to promote purchases of supplies in business.	14.6	DFPR	Governor's Office	Handling donated items creates a problem of sorting, space and handling	Donations must be made in cash and this in turn is used to directly inject the economy.

TIME	OPERATIONAL FUNCTION	TASK	ESF	PRIMARY AGENCY	SUPPORT AGENCY	LIMITATION	CONTINGENCY
30 days +	Restoring economics and business	Maintain cash payment services in mobile collections and with extended hours to facilitate access to goods at ports.	18	DHPR	N/A	Continues the process of collecting lift, SURI operating as usual, creating ham stopper on the piers	Dispense to Treasury processes, manual invoice and collection in 30 days to expedite. Dispense to Treasury processes
30 days +	Restoring economics and business	Facilitate the flow of the supply chain in PR so that it is local shops that supply as many supplies as possible.	7	BEOC	PREMB	Carrier shortages	Bringing drivers from USA There are drivers in PR we need to make a record of them
30 days +	Business Recovery	Businesses will need to identify and prioritize critical resources to restart critical operations.	17, 14	BEOC	PREMB	N/A	N/A
30 days +	Business Recovery	Check condition of information systems, equipment.	ALL	ALL	ALL	N/A	N/A
30 days +	Business Recovery	Assess additional risks to your facilities.	ALL	ALL	ALL	N/A	N/A
30 days +	Business Recovery	Operate from your alternate facilities.	17, 14	ALL	ALL	N/A	N/A

TIME	OPERATIONAL FUNCTION	TASK	ESF	PRIMARY AGENCY	SUPPORT AGENCY	LIMITATION	CONTINGENCY
30 days +	Business Recovery	Make claims to insurance for loss of content and income.	ALL	ALL	ALL	N/A	N/A
30 days +	Business Recovery	Apply for help programs such as <i>Small Business Administration loans</i> .	17, 14	BEOC	N/A	N/A	N/A
30 days +	Business Recovery	Request help and crisis management for your employees.	17, 14	BEOC	N/A	N/A	N/A
30 days +	Business Recovery	Guidance to employees as individual federal aids.	17, 14	BEOC	N/A	N/A	N/A
30 days +	Business Recovery	Stay in communication with representatives of the private company in the EOC to request Assistance such as electric generators.	17, 14	BEOC	N/A	N/A	N/A
30 days +	Business Recovery	Review your pre-agreements with private companies for emergency supplies.					
30 days +	FEMA Recovery Center	All Federal Aid programs will be activated through FEMA and other federal agencies.	14, 18	FEMA	N/A	N/A	N/A

TIME	OPERATIONAL FUNCTION	TASK	ESF	PRIMARY AGENCY	SUPPORT AGENCY	LIMITATION	CONTINGENCY
30 days +	FEMA Recovery Center	Coordinate with FEMA the establishment of Recovery Centers.	14, 18	FEMA	N/A	N/A	N/A
30 days +	FEMA Recovery Center	Coordinate massive information through the means to inform the public about the services of aid centers	14, 18	FEMA	N/A	N/A	N/A
30 days +	FEMA Recovery Center	Provide information on assistance available to farmers	11	DAPR	Usda FEMA	N/A	N/A
30 days +	Welfare	To guide Government Agencies and the private company on the public assistance program and its requirements.	5	FEMA	N/A	N/A	N/A
30 days +	Welfare	Payment of no less than 75 percent of eligible costs to collect debris from public areas and for emergency measures taken to save lives and protect property and public health.	14, 18	FEMA	N/A	N/A	N/A
30 days +	Welfare	Payment of no more than 75 percent of Pre-approved costs for risk mitigation projects.	14, 18	FEMA	N/A	N/A	N/A

TIME	OPERATIONAL FUNCTION	TASK	ESF	PRIMARY AGENCY	SUPPORT AGENCY	LIMITATION	CONTINGENCY
30 days +	Assistance to Individuals	Inform and guide through all means on FEMA's individual assistance program to citizens in general.	18	FEMA	N/A	N/A	N/A
30 days +	Assistance to Individuals	Rent payments for temporary housing to people whose homes are uninhabitable.	14, 18	FEMA	N/A	N/A	N/A
30 days +	Assistance to Individuals	Money for repairs and replacement of goods not covered by insurance.	14, 18	FEMA	N/A	N/A	N/A
30 days +	Assistance to Individuals	Money for medical, dental, funeral and other expenses not covered by insurance.	14, 18	FEMA	N/A	N/A	N/A
30 days +	Assistance to Individuals	Unemployment payments of up to 26 weeks for workers who temporarily lost their jobs.	14, 18	FEMA	N/A	N/A	N/A
30 days +	Assistance to Individuals	Low-interest loans to cover residential losses.	14, 18	FEMA	N/A	N/A	N/A
30 days +	SBA Loans	Inform and guide through all means about the Federal Small Business Administration's Loan program.	18	FEMA	Sba	N/A	N/A

TIME	OPERATIONAL FUNCTION	TASK	ESF	PRIMARY AGENCY	SUPPORT AGENCY	LIMITATION	CONTINGENCY
30 days +	SBA Loans	Loans of up to \$2 million for small businesses, small farm cooperatives and most private non utilities of all sizes that have suffered money flow problems.	18	FEMA	Sba	N/A	N/A
30 days +	SBA Loans	Loans of up to \$500,000 for farmers, farmers and aquifer operators to cover production costs.	18	FEMA	Usda	N/A	N/A
30 days +	Assistance to individuals	Crisis counseling for people traumatized by the disaster.	18	FEMA	N/A	N/A	N/A
30 days +	Mitigation Fund Program	Coordinate information and guidance on mitigation funds available through proposals for PR Government Agencies.	18	FEMA	N/A	N/A	N/A

AUTHORITIES AND REFERENCES

Legal Authority and References

Authorities, references and legal bases used in the implementation of the Operational Emergency Plan.

1. Federal

- Comprehensive PREPAredness Guide CPG 101 View. 2 Nov. 2010
- The Homeland Security Act of 2002, PL 107+296, enacted 11/25/02.
- The National Security Act of 1947, 50 U.S.C. 401 (as amended).
- Robert T. Stafford Disaster Relief and Emergency Assistance Act, as amended (42 U.S.C. 5121, et seq.).
- Executive Order 12656, Assignment of Emergency Preparedness Responsibilities, dated November 18, 1988, as amended.
- Executive Order 12472, Assignment of National Security and Emergency Preparedness TeleCommunications Functions, dated April 3, 1984.
- Executive Order 12148, Federal Emergency Management, dated July 20, 1979, as amended.
- PDD 62, Combating Terrorism – Homeland Defense, dated May 22, 1998.
- Animal Welfare Act 1966, as amended
- American Disability Act 1990, as amended
- United States Department of Animal Agriculture and Plant Health Inspection Service
- White House Memorandum, Background paper on Essential Functions Concept and Implementation and Rec Guidelines for Submitting Department/Agencies Priority Mission Essential Functions Information, dated January 10, 2005, by David W. Howe.

2. State + Government of Puerto Rico

- Law 20 of April 10, 2017. Department of Public Security Negotiated emergency management and disaster management of Puerto Rico.
- Executive Order 2014+043 Implementation of the National Emergency Management System (NIMS), 2014

References

- Comprehensive Preparedness Guide CPG 101 View. 2 Nov. 2010
- Homeland Security Exercise and Evaluation Program. 2013, DHS
- NFPA 1600 + Standard on Disaster/Emergency Management and Business Continuity/Continuity of Operations Programs (NFPA 1600, 2016)
- HSPD 7, Critical Infrastructure Identification, Prioritization, and Protection (CIP), dated Dec 17, 2003.
- HSPD 8, National Preparedness, dated December 17, 2003.
- Presidential Policy Directive PPD-8 National Preparedness
- The National Incident Management System (NIMS) Third Edition October 2017
- The National Response Framework Third Edition June 2016
- National Disaster Recovery Framework September 2011
- Nieves, B. Hurricane Maria Preliminary After Action Report. Puerto Rico Emergency Management Agency. Department of Public Security of Puerto Rico. ISP, Inc. October 29, 2017
- Earthquakes and Tsunamis in Puerto Rico and the US Virgin Islands United States Geological Survey. USGS Fact Sheet FS+141+00 April 2001

Appendices: Definitions and Acronyms

DEFINITIONS: (Glossary)

The following definitions are adopted for the purpose of implementing the NIMS Plan in the Government of Puerto Rico.

1. Agency – Division of the government with specific functions and offering particular assistance. In the "ICS", agencies are defined by jurisdiction (having responsibility for incident management) or contributors (provide resources or other assistance).
2. Evaluation + Interpretation of measures and other information to provide the basis for decision-making.
3. Support Agency – Agency or organization that provides staff, services or other resources to the agency that has direct responsibility for incident handling.
4. Available Resources – Resources assigned to an incident, collated and available for a mission, usually at the scene.
5. Chain of Command - a series of commands, control, executives or hierarchy position in order of authority
6. Head – Title in "ICS" for the person responsible for managing functional sections of: Operations, Plans, Logistics, Administration / Finance and Intelligence (if set separately).
7. Command+ The act of directing, ordering, or controlling by virtue of an explicit, regulatory or delegated authority statute.
8. Commander + In an incident management organization, command officers consist of an Incident Commander and a special public information group, security officer, liaison officer, and other positions as required, who respond directly to the Incident Commander. They may have an assistant or attendees, as needed.
9. Dispatch – Orderly movement of a resource or resources to an Operational mission or an administrative movement from one place to another.
10. Emergency Operations Center (EOC) – Physical location where information and resources are coordinated to support the management of household incidents that normally occur.
11. Emergency Operational Plan – An Operational plan that has several jurisdictional levels to respond to a wide variety of hazards.
12. Evacuation – Organized, by phases and supervised withdrawal, dispersal or removal of civilians from dangerous or potentially hazardous areas, care and location to safe places.

13. Incident – event or event, natural or caused by human beings that requires response in order to protect the life or property of citizens. Incidents can include major disasters, emergencies, terrorist attacks, terrorist attacks, urban fires, floods, spillage of hazardous materials, spills, nuclear accidents, air accidents, earthquakes, earthquakes, tornadoes, tropical storms, war-related disasters, public health, medical emergencies, and other emergencies that require emergency response.

14. Incident Action Plan – An oral or written plan containing general objective on the strategy for handling an incident. This should include identifying Operational resources and allocations. Also include annexes that provide address and important information to handle an incident during one or more Operational periods.

15. Incident Commander Position – Field location at the tactical level where incident command functions are performed at the scene. The incident command post can be located at the base of the incident or in other facilities and is usually identified with a green light.

16. Incident Command System (ICS) – A standardized PREMB system specifically designed to provide the adoption of an organizational structure that reflects the complexity and demand for one or more incidents without jurisdictional boundaries. It is the combination of facilities, equipment, personnel, procedures and communications operating with a common structure, designed for resource management during incidents.

17. Incident Commander – Person responsible for all incidents, including the development of strategies, tactics and request for the release of resources. He has full authority and responsibility to lead the operation of an incident and is responsible for handling all operations at the site of the incident.

18. Initial Action – Actions taken by response personnel who arrived (arrived) first at the site of the incident.

19. Initial Response – Resources initially assigned to an incident.

20. Joint Information Centre (JIC)+ Facility established to coordinate all public information activities related to the incident. It's the contact for all the media at the scene of the incident. Public information officers from all participating agencies must collaborate with the "JIC".

21. Jurisdiction – Scope of Authority. Public agencies have jurisdiction in an incident related to their responsibilities and legal authority. The jurisdictional authority in an incident may be political or geographical (e.g. municipality, state, or federal lines) or functional (e.g. safety, public health, fire).

22. Logistics – Provide resources and other services in order to support incident management.

23. National Incident Management System + Compulsory System by Presidential Guideline 5, which provides integration with local, federal and state governments to work effectively and efficiently together to Prepare, respond to and recover from domestic incidents regardless of cause, size or complexity.

24. Qualification and Certification – This subsystem provides the recommended qualification and certification standard for emergency handlers. It also enables the development of minimum standards for

expected interstate application resources. Standards generally include training, experience, physical and medical condition.

25. Impact Equipment – An established resource team of the same class and type that has established a minimum number of staff.

26. Task Force - (specialized team) Any combination of resources combined to support a specific mission or Operational need. All elements of a "Task Force" must have Common Communications and a designated leader.

27. Terrorism – Under the Homeland Security Act 2002, terrorism is defined as an activity that involves an act dangerous to human life or potentially destructive to a critical structure or key resources. It is a violation of criminal laws of the United States of America, State, or other division there is or is intent to intimidate or inhibit civilians or influence the government or affect a government's conduct for mass destruction, murder, or kidnapping. See section 15 of Homeland Security 2002 pub. L 107+296, 116 statute 2135 (2002).

28. Threat – any indicator of possible violence, harm or danger.

29. Essential emergency personnel + are first-response personnel, public health personnel, doctors, nurses, technicians, truck drivers, law and order agents, security officers, firefighters, paramedics, search and rescue personnel, chaplains, volunteers under mission assignments, communications technicians, contractors, food and medicine supply chain workers, critical infrastructure employees, military personnel, emergency coordinators, media personnel, social workers and doctors.

ACRONYMS

9-1-1	Emergency Systems Negotiated 9-1-1
PRASA	Aqueduct and Sewer Authority
Acc	Truckers and Cooperatives Association
ACT	Puerto Rico Highway Authority
Ads	Solid Waste Authority
PREPA	Electric Power Authority
Afc	Community Pharmacy Association
AIPR	Puerto Rico Industrialists Association
AMA/DOT	Metropolitan Bus Authority
AMSSCA	Administration of Mental Health and Anti-Addiction Services
PRPA	Puerto Rico Ports Authority
GSA	General Service Administration
Atm	Maritime Transport Authority
ATPR	Puerto Rico Land Authority
Bde	Puerto Rico Economic Development Bank
BEOC	<i>"Business Emergency Operations Center"/ Business Emergency Operations Center</i>
Chapter	The Capitol
CDOC	<i>Center for Disease Control</i>
Cert	<i>Community Emergency Response Team</i>
CeSCO	Driver Service Centers
Cfda	<i>Catalog of Federal Domestic Assistance Numbers (CFDA)</i>
CIAPR	Puerto Rico College of Engineers and Surveyors
CIKR	<i>Critical Infrastructure and Key Resource</i>
Coe	Emergency Operations Center
Comm	Communications
Cra	American Red Cross
NTSP	Public Service Commission
Ct	Tourism Company
DAPR	Puerto Rico Department of Agriculture
DOC	<i>The Department of Correction and Rehabilitation of Puerto Rico</i>
DE	Puerto Rico State Department
DEPR	Puerto Rico Department of Education
DFPR	Puerto Rico Family Department
DHHS	<i>Department of Health and Human Services</i>
DHPR	Puerto Rico Department of Finance
DHS	<i>Department of Homeland Security</i>
DJPR	Puerto Rico Department of Justice

ACRONYMS

DMORT	<i>Disaster Mortuary Operational Response Team (DMORT)</i>
DOD	<i>U.S. Department of Defense</i>
DOJ	<i>Department of Justice</i>
Dot	<i>Department of Transportation</i>
DRC	<i>Disaster Recovery Center</i>
Drd	Puerto Rico Department of Recreation and Sports
DRNA	Puerto Rico Department of Natural and Environmental Resources
DSAT	<i>Disaster Survivor Assistance Team</i>
DSP	Puerto Rico Department of Public Safety
PRDOH	Puerto Rico Department of Health
DTOP	Puerto Rico Department of Transportation and Public Works
DVPR	Puerto Rico Department of Housing
Ehp	<i>Environmental and Historic Preservation</i>
Emac	<i>Emergency Management Assistant Compact</i>
EOC	<i>Emergency Operations Center</i>
Epa	<i>Environmental Protection Agency</i>
ESF	<i>Emergency Support Function</i>
Fco	<i>Federal Coordinating Officer</i>
Fda	<i>Food and Drug Administration</i>
FEMA	<i>Federal Emergency Management Agency</i>
FIRM	<i>Flood Insurance Rate Map</i>
Fms	<i>Federal Medical Stations</i>
FNSS	<i>Function Needs Support Services</i>
Gar	<i>Government Authorized Representative</i>
Gis	Geographic Information Systems
Gob	Puerto Rico Governor's Office
Gsa	<i>U.S. General Services Administration</i>
HSEEP	<i>Homeland Security Exercise and Evaluation Program</i>
Ics	<i>Incident Command System</i>
Ihp	<i>Individuals and Households Program</i>
Imat	Incident Management Assistance Team
Imt	<i>Incident Management Team</i>
Iof	<i>InterAgency Initial Operating Facility</i>
Isb	<i>Incident Staging Base</i>
Ivu	Sales and Use Taxes
DRN HM	Environmental Quality Board
Jfo	<i>Joint Field Office</i>

ACRONYMS

Jic	<i>Joint Information Center</i>
JITT	<i>Just in Time Training</i>
Jp	Planning Board
NET	Puerto Rico Telecommunication Regulatory Board
Amateur Radio	Puerto Rico Amateur Radio Federation
Lep	<i>Relations Limited English Proficiency</i>
Mers	<i>Mobile Emergency Response System</i>
Measure	Chamber of Marketing, Industry and Food Distribution
NCBPR	Puerto Rico Fire Corps Negotiated
NCFPR	Puerto Rico Forensic Sciences Negotiated
NDMS	<i>National Disaster Medical System</i>
EMSPR	Puerto Rico Medical Emergency Corps Negotiated
NFHL	<i>The National Flood Hazard Layer</i>
Nfip	<i>The National Flood Insurance Program</i>
NGO's	<i>Nongovernmental organizations</i>
Nims	<i>National Incident Management System</i>
NMAS	<i>National Mutual Aid System</i>
PREMB	Emergency Management and Disaster Management Negotiated
NPPR	Puerto Rico Police Negotiated
NPSC	<i>National Processing Service Centers</i>
Nrf	<i>National Response Framework</i>
NVRT	<i>National Veterinary Response Team</i>
NWS	<i>National Weather Service</i>
OGP	Office of Management and Budget
OMME	Municipal Emergency Management Office
Ona	<i>Other Needs Assistance</i>
OVAD	Active Voluntary Disaster Organizations
PAC Teams	<i>Public Assistance Coordinators</i>
Pai	Incident Action Plans
Pda	<i>Preliminary Damage Assessment</i>
PEE	Emergency Essential Personnel
Pio	<i>Public Information Office</i>
Pm	Municipal Police
PRIDOCO	<i>Puerto Rico Industrial Development Company</i>
PRJOCIP	<i>Joint Operational Catastrophic Incident Plan of Puerto Rico</i>
PRNG	<i>Puerto Rico National Guard</i>
Psa	<i>Protective Security Advisor</i>

ACRONYMS

Rad	<i>Risk Assessment Division</i>
RRCC	<i>Regional Response Coordination Center</i>
RRCS	<i>Regional Response Coordination Staff</i>
RSOI	<i>Reception, Staging, Onboarding, and Integration Operations</i>
RSS	<i>Receive, Stage and Store</i>
Sar	<i>Search and Rescue</i>
Snj	<i>Strategic National Stockpile</i>
Suri	<i>Unified Internal Revenue System</i>
US&R	<i>Urban Search and Rescue</i>
USACE	<i>United States Army Corps of Engineers</i>
USCG	<i>United States Coast Guard</i>
Usda	<i>United States Department of Agriculture</i>
USTD	<i>United States Treasury Department</i>
Going	<i>Veterans Affairs</i>
VOAD	<i>Voluntary Organizations Active in Disaster</i>
Web EOC	<i>Emergency Operating Center</i>